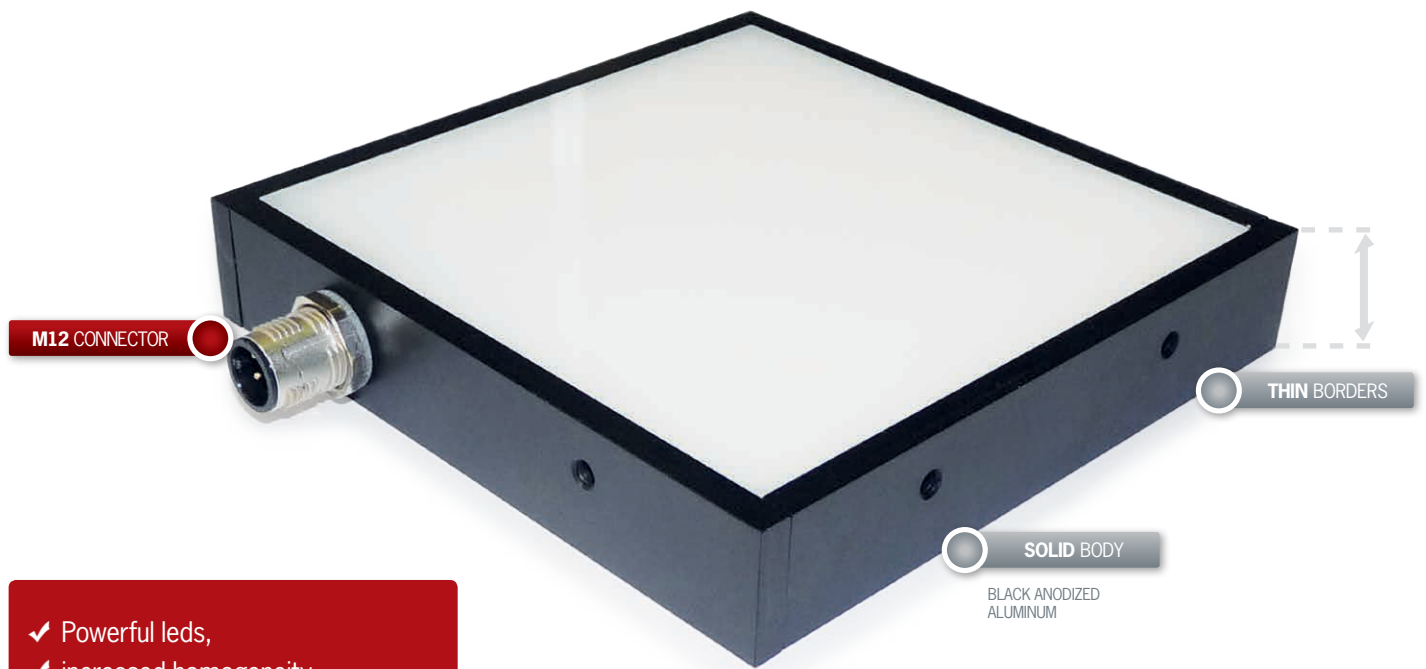


SMALL SBACK II

COMPACT BACKLIGHT

▷ MACHINE VISION SYSTEM ▷ QUALITY CONTROL WITH CAMERA ▷ HIGH POWERFUL LIGHTING ▷ SMALL BACKLIGHT ▷ DIFFUSE AND HOMOGENEOUS LIGHTING

HIGH POWERFUL LIGHTING FOR CONFINED SPACES.



- ✓ Powerful leds,
- ✓ increased homogeneity,
- ✓ light & compact backlight.

NEW SMALL SBACK II
From 2 to 5 times more powerful* !
* according to led colour.



Thanks to its thin borders and its slight width, the new SMALL BACK II is a backlight both powerful and homogeneous, that perfectly fits the confined spaces. Settled under the objects to be controlled, the SMALL BACK II highlights the global shape of the objects (shadow puppet effect), which enables the verification of possible outline defects and material lacks. Equipped with new leds, it offers a lighting power

4 to 5 times higher than in the previous version for the white and red colours (WHI & 630). Its homogeneity has also been improved on the entire surface, including the backlight edges, so as to prevent the appearance of hot spots. The new SMALL BACK II works in continuous and strobe mode, and is equipped with a M12 connector that suits the industrial standards.



THE **SMALL SBACK** IS AVAILABLE IN **VARIOUS DIMENSIONS**:
From **50 x 50 mm** to **200 x 200 mm** (see details on the back).

TECHNICAL SPECIFICATIONS

	050502	100502	150502	200502	101002	151002	201002	151502	201502	202002
Electronics										
Power supply	24 VDC +/-10%									
Functioning mode	Continuous or strobe according to wiring									
Wiring	M12 4 poles male connector									
Max. consumption (W)	3	6	9	12	12	18	24	25	36	45
Optics										
Colour	White, Red, Green, Blue, Infrared									
Useful dimensions (mm)	51x51	102x51	153x51	204x51	102x102	153x102	204x102	153x153	204x153	204x204
Mechanics										
Thickness (mm)	20									
Width x Length (mm)	61x61	112x61	163x61	214x61	112x112	163x112	214x112	163x163	214x163	214x214
Weight (g)	85	130	160	200	200	260	320	350	450	560
Body materials	Black anodized aluminum									
Diffuser	Opaque diffuser									
Fixing	M4 screws (not supplied)									
Environment										
Operating temperature	0 - 40°C									
Storage temperature	0 - 60°C									
IP protection	IP 40									
Labels	RoHS-CE-DEEE									

LIGHTING POWER

Small SBACK II
32 KLux

Lighting power measured on the diffusing plate – White LED colour.



HOW TO BUILD YOUR REFERENCE

REQUIRED SETTINGS		
SBACKII	REFERENCES	COLOUR
	050502	WHI <input type="checkbox"/>
	100502	630 <input type="checkbox"/>
	150502	525 <input type="checkbox"/>
	200502	470 <input type="checkbox"/>
	101002	880 <input type="checkbox"/>
	151002	
	201002	
	151502	
	201502	
	202002	

RELATED PRODUCTS

Ask for your add-ons, customized for the Small SBACK II

- wiring
- fixing hardware
- safety glasses

EXAMPLES :

- SBACK II USEFUL DIMENSIONS : 51 X 51 WHITE LEDS : → SBACKII050502-WHI
- SBACK II USEFUL DIMENSIONS : 153 X 102 RED LEDS : → SBACKII151002-630
- SBACK II USEFUL DIMENSIONS : 204 X 153 BLUE LEDS : → SBACKII201502-470

RESULTS :

- SBACKII050502-WHI
- SBACKII151002-630
- SBACKII201502-470

Features and presentations liable to modifications without prior notice. B-3 version, 2018/05 Edition

TPL VISION UK

Brenchley House - School Road - Charing - Kent TN27 0JW - UK
Tel. +44 (0)1738 450 504 - contact@tpl-vision.co.uk

www.tpl-vision.com



Other available documents :

- PDF, DWG, DXF, IGS, STEP & X_Y DRAWINGS
- USER'S GUIDE

Small SBACK II

