



Punching

Round and special shape punches	416
Standard punch systems	418
Slug Buster® punch systems	420
Slug-Splitter® punch system for stainless steel	421
Speed-Punch™ punch system	422
Special shape punches	425

Punching tools and sets	434
Speed Nut	436
Mechanical and hydraulic punching tools	436
Battery powered punching tool LS 60-L	438
Battery powered punching tool LS 50 Flex	439
Battery powered universal tools	440
Slug Buster® punch sets	447
Speed-Punch™ punch sets	449
Slug-Splitter® punch sets	451
Slug Buster® punching tools and sets	452

Hole saws	456
HSS bi-metal hole saws	458

Bits and step bits	464
---------------------------	------------



PATENTED CLEAN SOLUTION - ROUND AND SPECIAL SHAPE PUNCH

Speed and innovation set our Greenlee products apart. With Speed Punch and Slug Splitter, you can work quickly and precisely in any application. Our commitment to your work.



In brief

- ▶ Long service life
- ▶ For aluminium and steel to 3.5 mm thick
- ▶ Threadless profile for quick replacement
- ▶ No jamming of the slug
- ▶ Threads require no maintenance



▶ Quick punching with Speed Punch

We make you faster. Time-saving operations are really easy with the Speed Punch profile. The threadless stamp profile is quickly changed via clamp technology - no more screwing the counter nut off and on! Which also means: Threads are care and maintenance-free. Punching is up to three-times quicker than before.

- Quick punching system: Punching up to 3 x quicker
- For aluminium and steel up to 3.5 mm thick
- Innovative clamp technology
- No more screwing the counter nut off and on
- Threads are now care and maintenance-free

Speed Punch video:
youtube.com/watch?v=0LJ7mHEgeow



▶ Slug Splitter: Automatic clean punching

We make it easy for you. The Slug Splitter separates punched slug remnants. You can fully concentrate on punching stainless steel, without delays due to time-consuming removal of punched slug remnants.

- Splits the punches into two parts for direct removal of punch slug remnants
- Longest service life due to high-quality stainless steel
- Suitable for use with all Greenlee punching hydraulics



▶ Square punch: Special-shaped punches

Displays and panels require appropriate square-shaped punching. The special punching stamp from Greenlee punches stainless steel and mild steel without leaving burrs. High-quality tool steel meets your requirements - in proven Greenlee quality.

- For mild steel (St37), plastic and aluminium to 3.0 mm thick and V2A stainless steel up to 1.5 mm
- Burr-free punching of display panels
- High-quality tool steel





Standard punch systems



► Ball bearing draw stud reduces operating force

Suitable for

- Mild steel (St37), plastic and aluminium up to 3.5 mm

Operation

- Manual / hydraulic

Predrilling

- Draw stud 9.5 mm dia., pilot drill 9.7 mm diameter 50360183
draw stud 19.0 mm dia., pilot drill 20.5 mm diameter 50344030

Scope of supply

- Complete system including punch, die and draw stud for manual operation

Additional information

- *50042181 Draw stud without ball-bearing

Punch size			Max. Material thickness	Individual parts for manual operation					Draw studs + Accessories for hydraulic units				Complete unit
True dimension	Standard size			Punch	Die	Draw stud with ball bearing	Ball bearing nut	Spacer	Draw studs		Accessories		
	mm	Pg	ISO						mm (St37)	Hand hydraulic 7804E, 7904E	Battery powered punch LS 50 FLEX LS 60 L	Hydr. pump 50159062 50250973	Adapter sleeves 19,0 / 28,6
12.7	Pg 7		1.5	50069969	50042351	50042181							50024086
14.3			1.5	50042300	50042297	50042181							50024337
15.2	Pg 9		2.0	50213164	50320025	50000420							50211153
15.9			1.5	50042238	50042246	50042181						50339672	50024094
16.2		ISO 16	2.0	50351931	50351621	50000420			51300430		51300430	50339672	50351923
18.6			2.0	50177001	50320033	50000420			51300430		51300430	50339672	50188860
19.1			2.0	50039989	50039997	50000420			51300430		51300430	50339672	50206672
20.4	Pg 13	ISO 20	2.0	50176978	50320041	50000420			51300430		51300430	50339672	50188879
20.6			2.0	50042262	50042254	50000420			51300430		51300430	50339672	50206680
22.5	Pg 16		3.5	51040060	51147220	50000420			51300430		51300430	50339672	50225634
23.8			2.0	50042386	50042378	50000420			51300430		51300430	50339672	50253417
25.4		ISO 25	2.0	50039865	50351648	50000420			51300430		51300430	50339672	50206702
27.0			2.0	50042408	50042424	50000420			51300430		51300430	50339672	50253425
28.3	Pg 21		3.5	51040080	51069720	50040405			51300430		51300430	50339672	50225642
28.3	Pg 21		2.0	50368826	50320068	50000420			51300430		51300430	50339672	50369105
28.6			2.0	50039903	50039911	50000420			51300430		51300430	50339672	50206710
30.5			1.5	50362828	50362798	50000420			51300430		51300430	50339672	50365061
31.8			1.5	50040022	50040030	50000420			51300430		51300430		50206737
32.5	Pg 32		3.5	50244590	50351680	50040405			50318721		50318721		50244760
33.4			1.5	50065874	50065866	50000420			50318721		50318721		50253441
34.6			3.5	50040103	50040111	50040405			50318721		50318721		50225650
34.9			3.5	50047345	50047353	50040405			50318721		50318721		50254278
37.0	Pg 29		3.5	50183311	50320084	50040405			50318721		50318721		50188909
38.1			3.5	50047361	50070444	50040405			50318721		50381721		50254286
40.5		ISO 40	3.5	50244620	50351591	50040405			80318721		50381721		50244779



Punch size			Max. Material thickness mm	Individual parts for manual operation					Draw studs + Accessories for hydraulic units				Complete unit	
True dimension	Standard size			mm (St37)	Punch	Die	Draw stud with ball bearing	Ball bearing nut	Spacer	Draw studs		Accessories		
	mm	Pg	ISO							Hand hydraulic 7804E, 7904E	Battery powered punch LS 50 FLEX LS 60 L	Hydr. pump 50159062 50250973	Adapter sleeves 19,0 / 28,6	Part No.
			3.5	50042513	50042505	50040405				50318721	50381721		50253492	
			3.5	51069740	50040138	50040405				50318721	50318721		50225669	
			3.5	50042572	50042564	50040405				50318721	50318721		50253506	
			3.5	50176870	51320090	50040421				50318721	50318721		50188917	
			3.5	50042483	50042491	50040421				50318721	50318721		50253514	
			3.5	50069780	50040618	50040421				50318721	80318721		50225677	
50.8		ISO 50	3.5	50042327	50351613	50040421				50318721	50318721		50206761	
54.0	Pg 42		3.5	50042459	50361732	50040421				50318721	50318721		50206788	
57.2			3.5	50040588	50040596	50040421				50318721	50318721		50253603	
60.0	Pg 48		3.5	50176900	50320114	50040421				50318721	50318721		50188925	
61.5			3.5	50040626	50040634	50040421				50318721	50318721		50225685	
63.5		ISO 63	3.5	50042343	50042335	50041886				50318721	50318721		50206796	
66.7			3.5	50042521	50069977	50041886	50041878				52045040	52045040	50212141	
69.9			3.5	50042475	50042467	50041886	50041878				52045040	52045040	50253611	
70.6			3.5	50024450	50024434	50040421	50041878				52045040	52045040	50253832	
74.0			3.5	50041754	50041770	50041886	50041878				52045040	52045040	50199757	
76.2			3.5	50042599	50042580	50041886	50041878				52045040	52045040	50253727	
79.4			3.5	50063634	50063626	50041886	50041878				52045040	52045040	50254030	
82.0			3.5	50189050	50189069	50041886	50041878				52045040	52045040	50186353	
89.8			3.5	50041800	50041835	50041886	50041878				52045040	52045040	50199765	
95.3			3.5	50052659	50052667	50041886	50041878				52045040	52045040	50212168	
102.7			3.5	50046535	50046527	50046799	50046853	50046861			52045040	52045040	50031708	50199773
115.4			3.5	50046551	50046543	50046799	50046853	50046861			52045040	52045040	50031708	50199781
120.0			3.5	50214896	50214918	50046799	50046853	50046861			52045040	52045040	50031708	50215191
143.7			3.5	50054473	50054481	50046799	50046853	50046861			52045040	52045040	50031708	50199803





Slug Buster® punch system



- ▶ For quick, clean, effortless and burr-free holes
- ▶ Split slugs fall free and can be removed easily

Suitable for

- Mild steel (St37), plastic and aluminium up to 3.5 mm

Operation

- Manual / hydraulic

Predrilling


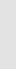



- Draw stud 9.5 mm dia., pilot drill 9.7 mm diameter 50360183
draw stud 19.0 mm dia., pilot drill 20.5 mm diameter 50344030

Scope of supply

- Complete system including punch, die and draw stud for manual operation

Additional information

- 50042181 Draw stud without ball-bearing

Punch size			Max. Material thickness	Individual parts for manual operation			Draw studs + Accessories for hydraulic units		Complete unit
True dimension	Standard size								
mm	Pg	ISO	mm (St37)	Punch	Die	Draw stud with ball bearing	Hand hydraulic 7804E 7904E	Battery powered punch LS 50 FLEX LS60 L	Part No.
12.5	Pg 7	ISO 12	1.5	50067281	50067290	50042181			50067273
15.2	Pg 9		2.0	50319698	50320025	50000420	51300430	51300430	50319892
16.2		ISO 16	2.0	50351630	50351621	50000420	51300430	51300430	50351770
18.6	Pg 11		2.0	50319701	50320033	50000420	51300430	51300430	50319906
20.4	Pg 13	ISO 20	2.0	50319710	50320041	50000420	51300430	51300430	50319914
22.5	Pg 16		2.0	50317563	51147220	50000420	51300430	51300430	50319620
25.4		ISO 25	2.0	50351656	50351648	50000420	51300430	51300430	50351788
28.3	Pg 21		3.0	50317571	50069721	50040405	50318721	52045040	50319639
28.3	Pg 21		2.0	50319736	50320068	50000420	51300430	51300430	50319930
30.5			2.0	50362844	50362798	50000420	51300430	51300430	50365088
30.5			3.5	50602373	50362780	50040405	50318721	52045040	50602462
32.5		ISO 32	3.5	50351699	50351680	50040405	50318721	52045040	50351796
34.6			3.5	50317580	50040111	50040405	50318721	52045040	50319647
37.0	Pg 29		3.5	50319752	50320084	50040405	50318721	52045040	50319957
40.5		ISO 40	3.5	50351583	50351591	50040405	50318721	52045040	50351800
43.2			3.5	50317598	50040138	50040405	50318721	52045040	50319655
47.0	Pg 36		3.5	50319760	51320090	50040421	50318721	52045040	50319965
49.6			3.5	50317601	50040618	50040421	50318721	52045040	50319663
50.8		ISO 50	3.5	50351605	50351613	50040421	50318721	52045040	50351818
54.0	Pg 42		3.5	50361724	50361732	50040421	50318721	52045040	50361716
60.0	Pg 48		3.5	50319787	50320114	50040421	50318721	52045040	50319981
61.5			3.5	50317610	50040634	50040421	50318721	52045040	50319671
64.0		ISO 63	3.5	50351672	50351664	50040421	50318721	52045040	50351826



SLUG SPLITTER[®] punch system (stainless steel)



- ▶ Special alloy for maximum service life
- ▶ Split slugs fall free and can be disposed of easily

Suitable for

- Stainless steel (V2A), mild steel (St37), plastic and aluminium up to 3.5 mm thick

Operation

- Hydraulic

Predrilling




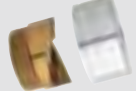
- Draw stud 11.1 mm dia., pilot drill 12.7 mm diameter 50344102
draw stud 19.0 mm dia., pilot drill 20.5 mm diameter 50344030

Scope of supply

- Complete system including punch and die

Additional information

- * = Slug Splitter SC[®] - self-centring

Punch size			Max. Material thickness	Individual parts for manual operation		Draw studs	Complete unit
True dimension	Standard size						
	mm	Pg	ISO	mm (V2A)	Punch	Die	Pump, hand and battery powered
15.2	Pg 9		2.5	50311174	50311263	50294512	50069519
16.2		ISO 16	2.5	50045997	50045989	50294512	50069527
18.6	Pg 11		2.5	50311190	50311280	50294512	50069535
20.4	Pg 13	ISO 20	2.5	50311204	50311298	50294512	50069543
22.5	Pg 16		3.5	50281542	50281550	50294512	50069551
25.4		ISO 25	3.5	50046020	50046012	50294512	50069560
28.3	Pg 21		3.5	50281569	50281577	50294520	50069578
30.5			3.5	50364901	50364898	50294520	50069586
32.5		ISO 32	3.5	50046055	50046039	50294520	50069594
34.6			3.5	50281585	50281593	59294520	
37.0	Pg 29		3.5	50311220	50311352	50294520	50069608
40.5		ISO 40	3.5	50046080	50046071	50294520	50069616
43.2			3.5	50281607	50281615	50294520	
47.0	Pg 36		3.5	50311239	50311310	50294520	50069624
49.6			3.5	50281623	50281631	50294520	
50.8		ISO 50	3.5	50046110	50046098	50294520	50069632
54.0	Pg 42		3.5	50311247	50311328	50294520	50069640
60.0	Pg 48		3.5	50311255	50311336	50294520	50069659
61.5			3.5	50281658	50281666	50294520	
64.0		ISO 63	3.5	50046144	50046136	50294520	50069667



Punching

Round and special shape punches

Speed Punch™ punch system



- ▶ Innovative threadless punch profile
- ▶ Easy and quick handling as the screwing and unscrewing of the counter nut is not required

Suitable for

- Mild steel (St37), plastic and aluminium up to 3.5 mm

Operation

- Hydraulic

Predrilling

- Draw stud 9.5 mm dia.; pilot drill 9.7 mm dia.
draw stud 19.0 mm dia.; pilot drill 20.5 mm dia.

Scope of supply

- Complete system including punch and die

Additional information

- Counter nuts and draw studs must be ordered separately, they are not included in scope of supply

Punch size			Max. Material thickness	Individual parts		Draw studs	Speed lock	Complete unit (Punch and die)
True dimension	Standard size							
mm	PG	ISO	mm (St37)	Punch	Die	(not included)	(not included)	Part No.
16.2		ISO 16	3.5	52066021	52066022	52066001	52066002	52055431
20.4	PG 13	ISO 20	3.5	52066023	52066024	52066001	52066002	52055432
22.5	PG 16		3.5	52065998	52065999	52066001	52066002	52055433
25.4		ISO 25	3.5	52066025	52066026	52066001	52066002	52055434
32.5		ISO 32	3.5	52066027	52066028	52047818	52047817	52055435
40.5		ISO 40	3.5	52066029	52066030	52047818	52047817	52055436
50.8		ISO 50	3.5	52066031	52066032	52047818	52047817	52055437
64.0		ISO 63	3.5	52066033	52066034	52047818	52047817	52055438

Accessories	Part No.	Page
Speed Lock und Draw studs 9.5 mm für ISO 16/20/25 und PG 16	52055439	
Speed Lock und Draw studs 19.0 mm für ISO 32/40/50/63	52055440	



Draw studs with manual drivers

► High wear resistance

Order info

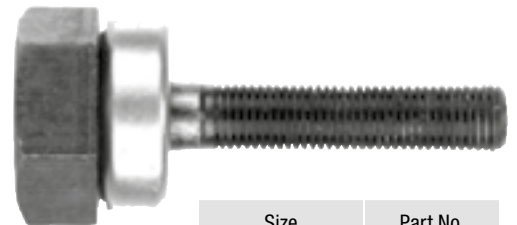
- To increase the service life, we recommend greasing the draw studs with Greenlee installation paste no. 50115472
- Sizes given are diameter x length
- Subject to tolerance deviations



Size	Part No.
28.6 x 190 mm	50046799



Size	Part No.
19 x 140 mm	50041886



Size	Part No.
9.5 x 40 mm	50000420



Size	Part No.
6.5 x 35 mm	50042181



Size	Part No.
19 x 75 mm	50040421



Size	Part No.
19 x 55 mm	50040405



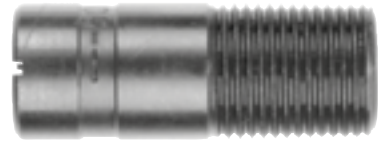
Punching

Round and special shape punches

Draw studs for hydraulic drivers

Order info

- To increase the service life, we recommend greasing the draw studs with Greenlee installation paste no. 50115472
- Sizes given are diameter x length
- Subject to tolerance deviations



Adapter

Size	Part No.
19 x 48 mm (Innen 9.5 mm)	50339672
19 x 48 mm (Innen 6.3 mm)	50601148
19 x 48 mm (Innen 12.7 mm)	50601679



Size	Part No.
28.6 x 76 mm	50031708



Size	Part No.
9.5 x 71 mm	51300430



Size	Part No.
19 x 105 mm	50318721



Size	Part No.
19 x 140 mm for Slug Splitter®	50294520



Size	Part No.
11.1 x 108 mm for Slug Splitter®	50294512



Size	Part No.
9.5 mm to 19 mm, 122 mm	52042827



Rectangular punch



Suitable for

- Mild steel (St37), plastic and aluminium to 3.0 mm and V2A 1.5 mm
- Punching of burr-free openings

Operation

- Manual / hydraulic

Predrilling






- 9.7 mm dia. pilot drill 50360183
- 12.7 mm dia. pilot drill 50344102
- 15.9 mm dia. pilot drill 50344030
- 30.2 mm dia. 50364146

Scope of supply

- Punch unit including punch, die, draw stud, counter nut and ball-bearing nut

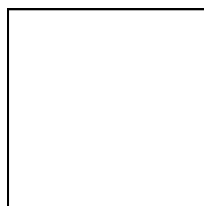
Additional information

- * = only for use with hydraulic punch drivers 50159062, 50250973, LS60L and LS50FLEX
- ** = only for use with hydraulic punch drivers 50159062, 50250973 and LS50FLEX

Punch size A x B	Max. Material thickness	Operating mode	Individual parts f. manual operation					Adapter for hydr. punch driver	Mounting hole-dia.	Complete unit
										
mm	mm (St37)		Punch	Die	Draw studs	Ball bearing nut	Counter nut	Part No.	mm	Part No.
11.1 x 22.2	1.5	Hand/hydr.	50600265	50600273	50601156	50601202	50052446	50601148	9.7	50600257
17.0 x 19.0	2.0	Hand/hydr.		50600303	52020113	50347330	50046381	50339672	12.7	50610281
19.1 x 29.0	2.0	Hand/hydr.	50600320	50600338	50601172	50601652	50602586	50601679	15.9	50600311
19.1 x 33.3	2.0	Hand/hydr.	50600354	50600362	50601172	50601652	50602586	50601679	15.9	50600346
21.9 x 25.9	2.0	Hand/hydr.	50600389	50600397	50601172	50601652	50602586	50601679	15.9	50600370
22.0 x 30.0	2.0	Hand/hydr.	50600419	50600427	50601172	50601652	50602586	50601679	15.9	50600400
22.0 x 42.0	2.0	Hand/hydr.	50600451	50600460	50601172	50601652	50602586	50601679	15.9	50600435
25.1 x 29.0	2.0	Hand/hydr.	50600486	50600494	50601172	50601652	50602586	50601679	15.9	50600478
31.8 x 35.1	2.0	Hand/hydr.	50600516	50600524	50601172	50601652	50602586	50601679	15.9	50600508
29.0 x 71.0	3.0	Hydr.			52045298		52045300		28.6	52045296
30.0 x 90.0	3.0	Hydr.			52045298		52045300		28.6	52045297
33.3 x 66.7	3.0	Hydr.	50600540	50600559	50601180		50602357		30.2	50600532
35.0 x 52.0	3.0	Hydr.	50600575	50600583	50601180		50602357		30.2	50600567
35.0 x 65.0	3.0	Hydr.	50600605	50600613	50601180		50602357		30.2	50600591
35.0 x 82.0	2.0	Hydr.*	50600630	50600648	50601180		50602357		30.2	50600621
35.0 x 112.0	2.0	Hydr.*	50600664	50600672	50601180		50602357		30.2	50600656
46.0 x 92.0	3.0	Hydr.*	50600699	50600702	50601180		50602357		30.2	50600680
57.2 x 88.9	3.0	Hydr.*	50600729	50600737	50601180		50602357		30.2	50600710
68.0x138.0	2.0	Hydr.**	50600753	50600761	50601180		50602357		30.2	50600745



Square punch



Suitable for

- Mild steel (St37), plastic and aluminium to 3.0 mm and V2A 1.5 mm
- Punching of burr-free openings

Operation

- Manual / hydraulic

Predrilling

- 9.7 mm dia. pilot drill 50360183
- 12.7 mm dia. pilot drill 50344102
- 15.9 mm dia. pilot drill 50344030
- 30.2 mm dia. 50364146

Scope of supply

- Punch unit including punch, die, draw stud, counter nut and ball-bearing nut

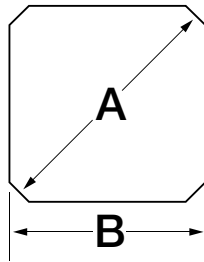
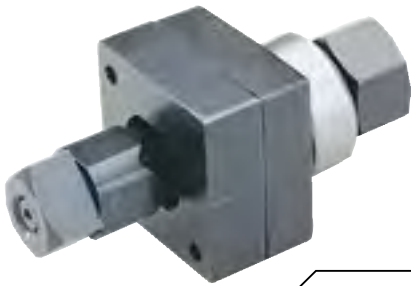
Additional information

- * = only for use with hydraulic punch drivers 50159062, 50250973, LS60L and LS50FLEX
- ** = only for use with hydraulic punch drivers 50159062 and 50250973

Punch size A x B	Max. Material thickness	Operating mode	Individual parts for manual operation					Adapter for hydr. punch driver	Mounting hole-dia. mm	Complete unit
mm	mm (St37)		Punch	Die	Draw studs	Ball bearing nut	Counter nut	Part No.	mm	Part No.
12.7 x 12.7	1.5	Hand/hydr.	50600028	50600036	50601156	50601202	50052446	50601148	9.5	50600010
15.9 x 15.9	2.0	Hand/hydr.			52020113	50347330	50046381	50339672	12.7	50610045
19.1 x 19.1	2.0	Hand/hydr.	50600087	50600095	52020113	50347330	50046381	50339672	12.7	50610076
22.4 x 22.4	2.0	Hand/hydr.			52020113	50347330	50046381	50339672	12.7	50610106
24.0 x 24.0	2.0	Hand/hydr.	50600141	50600150	52020113	50347330	50046381	50339672	12.7	50610137
25.4 x 25.4	2.0	Hand/hydr.	50600176	50600184	50601172	50601652	50602586	50601679	15.9	50600168
45.0 x 45.0	3.0	Hydr.	50767640	50767657	52046100		52046101		30.2	50115723
46.0 x 46.0	3.0	Hydr.	50600206	50600214	50601180		50602357		30.2	50600192
50.8 x 50.8	3.0	Hydr.	50601695	50601709	50601180		50602357		30.2	50601687
68.0 x 68.0	3.0	Hydr.	52055423	50601733	50601180		50602357		30.2	50601717
92.0 x 92.0	3.0	Hydr.*		50601768	50601180		50602357		30.2	50601741
104.8 x 104.8	2.0	Hydr.*	50601784	50601792	50601180		50602357		30.2	50601776
138.0 x 138.0	2.0	Hydr.**	50600230	50600249	50601180		50602357		30.2	50602349



Special square punch with flattened corners



Suitable for

- Mild steel (St37), plastic and aluminium to 2.0 mm
- Punching of burr-free openings

Operation

- Manual / hydraulic

Predrilling

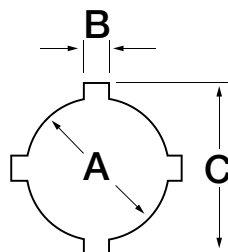
- 12.7 mm dia pilot drill 50344102

Scope of supply

- Punch unit including punch, die, draw stud, counter nut and ball-bearing nut

Punch size A x B	Max. Material thickness	Operating mode	Individual parts for manual operation					Adapter for hydr. punch driver	Mounting hole-dia. mm	Complete unit
			Punch	Die	Draw studs	Ball bearing nut	Counter nut			
mm	mm (St37)							Part No.	mm	Part No.
22.5 x 20.1	2.0	Hand/hydr.	50611264	50601271	52020113	50347330	50046381	50339672	12.7	50611257

Round punch with four anti-rotation tabs



Suitable for

- Mild steel (St37), plastic and aluminium to 3.0 mm

Operation

- Manual / hydraulic

Predrilling

- 15.9 mm dia. pilot drill 50344030

Scope of supply

- Punch unit including punch, die, draw stud, counter nut and ball-bearing nut

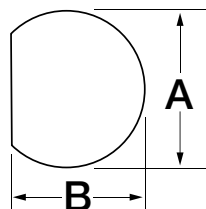
Punch size A x B x C	Max. Material thickness	Operating mode	Individual parts for manual operation					Adapter for hydr. punch driver	Mounting hole-dia. mm	Complete unit
			Punch	Die	Draw studs	Ball bearing nut	Counter nut			
mm	mm (St37)							Part No.	mm	Part No.
22.5 x 3.2 x 25.4	2.0	Hand/hydr.	50602390	50602500	50601172	50601652	50602586	50601679	15.9	50602381
30.5 x 4.8 x 36.0	3.0	Hand/hydr.	50602438	50602497	50601172	50601652	50602586	50601679	15.9	50602420



Punching

Round and special shape punches

„D“ shaped punch



Suitable for

- Mild steel (St37), plastic and aluminium to 2.0 mm

Operation

- Manual / hydraulic

Predrilling

- 12.7 dia. mm pilot drill 50344102

Scope of supply

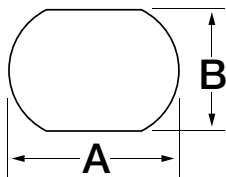
- Punch unit including punch, die, draw stud, counter nut and ball-bearing nut

Additional information

- * 50610809 and 50610830 available only as punch unit

Punch size A x B	Max. Material thickness	Operating mode	Individual parts for manual operation					Adapter for hydr. punch driver	Mounting hole-dia. mm	Complete unit
			Punch	Die	Draw studs	Ball bearing nut	Counter nut			
mm	mm (St37)							Part No.	mm	Part No.
12.7 x 11.9	2.0	Hand/hydr.	50600788	51600790	50601156	50601202	50052446	50601148	9.5	50600770
15.9 x 15.1	2.0	Hand/hydr.			50344218	50347330	50046381	50339672	12.7	50610809
19.1 x 17.9	2.0	Hand/hydr.			50344218	50347330	50046381	50339672	12.7	50610830

Double „D“ shaped punch



Suitable for

- Mild steel (St37), plastic and aluminium to 2.0 mm

Operation

- Manual / hydraulic

Predrilling

- 15.9 mm dia. pilot drill 50344030

Scope of supply

- Punch unit including punch, die, draw stud, counter nut and ball-bearing nut

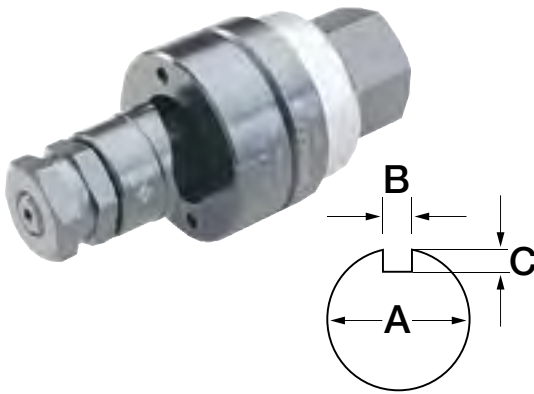
Additional information

- All punches available only as punch unit

Punch size A x B	Max. Material thickness	Operating mode	Individual parts for manual operation					Adapter for hydr. punch driver	Mounting hole-dia. mm	Complete unit
			Punch	Die	Draw studs	Ball bearing nut	Counter nut			
mm	mm (St37)							Part No.	mm	Part No.
19.5 x 16.3	2.0	Hand/hydr.			52020113	50347330	50046381	50339672	12.7	50610861
20.2 x 17.6	2.0	Hand/hydr.			52020113	50347330	50046381	50339672	12.7	50610892
23.2 x 19.2	2.0	Hand/hydr.			52020113	50347330	50046381	50339672	12.7	50610922
23.2 x 20.2	2.0	Hand/hydr.			52020113	50347330	50046381	50339672	12.7	50610953
34.9 x 28.6	2.0	Hand/hydr.			50601660	50601652	50602586	50601679	23.8	50600982



Keyway punch



Suitable for

- Mild steel (St37), plastic and aluminium to 2.0 mm

Operation

- Manual / hydraulic

Predrilling

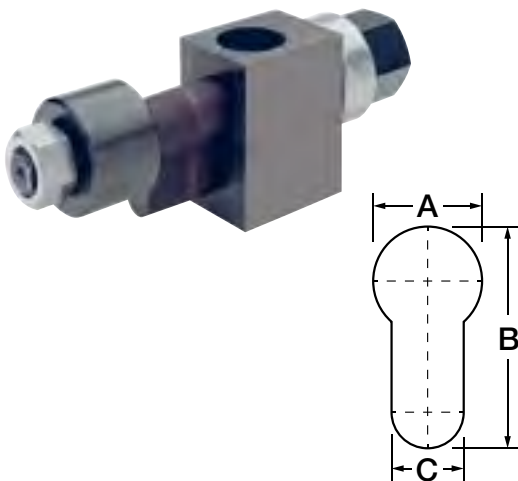
- 23.8 mm dia. pilot drill 50300083

Scope of supply

- Punch unit including punch, die, draw stud, counter nut and ball-bearing nut

Punch size A x B x C	Max. Material thickness	Operating mode	Individual parts for manual operation					Adapter for hydr. punch driver	Mounting hole-dia. mm	Complete unit
			Punch	Die	Draw studs	Ball bearing nut	Counter nut			
mm	mm (St37)							Part No.	mm	Part No.
12.2 x 1.4 x 0.8	1.5	Hand/hydr.	51601020	51601030	50601156	50601202	50052446	50601148	9.5	50601016
29.7 x 3.1 x 2.5	2.0	Hand/hydr.	51601050	51601060	50601660	50601652	50602586	50601679	23.8	50601040
32.1 x 4.0 x 2.5	2.0	Hand/hydr.	51601080	51601090	50601660	50601652	50602586	50601679	23.8	50601075
33.7 x 2.6 x 2.5	2.0	Hand/hydr.	51601110	50601121	50601660	50601652	50602586	50601679	23.8	50601105

Profile cylinder punch



Suitable for

- Mild steel (St37) up to 2.0 mm and aluminium up to 3.5 mm thick

Operation

- Manual / hydraulic

Predrilling

- 12.7 mm dia. pilot drill 50344102

Scope of supply

- Punch unit including punch, die, draw stud, counter nut and ball-bearing nut

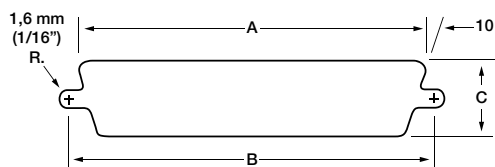
Punch size A x B x C	Max. Material thickness	Operating mode	Individual parts for manual operation					Adapter for hydr. punch driver	Mounting hole-dia. mm	Complete unit	
			Punch	Die	Draw studs	Ball bearing nut	Counter nut				
mm	mm (St37)							Part No.	mm	Part No.	
17.0 x 33.3 x 10.5	2.0	Hand/hydr.	50053027	50053035	50053043	50347330	90500113	50053051	50339672	12.7	50053078



Punching

Round and special shape punches

Sub-Min „D“ punch



Suitable for

- Mild steel (St37) up to 2.0 mm and aluminium up to 3.5 mm thick
- Front or rear mounting

Operation

- Manual / hydraulic

Predrilling

- 12.7 mm dia. pilot drill 50344102

Scope of supply

- Punch unit including punch, die, draw stud, counter nut and ball-bearing nut

Standard	Number Pole	Operating mode	Dimension			Individual parts for manual operation			Adapter for hydr. punch driver	Complete unit
			A mm	B mm	C mm	Draw studs	Ball bearing nut	Counter nut		
229	9	Hand/hydr.	20.0	24.9	11.9	52020113	50347330	50046381	50339672	50344366
231	15	Hand/hydr.	28.6	33.3	11.9	52020113	50347330	50046381	50339672	50344374
RS232	25	Hand/hydr.	42.0	47.1	11.9	52020113	50347330	50046381	50339672	50344200
234	37	Hand/hydr.	58.3	63.4	11.9	52020113	50347330	50046381	50339672	50344293
238	50	Hand/hydr.	55.9	61.0	14.7	52020113	50347330	50046381	50339672	50344447



Special shape punch for heavy duty connectors with 4 centre mark points



Characteristics

- Rectangular punches for heavy duty connectors feature a drilling jig built into the die, for drilling the 4 locating holes.

Suitable for

- Mild steel (St37) to 3.0 mm thick and aluminium to 3.5 mm

Operation

- Hydraulic

Predrilling

- 30.2 mm dia. pilot drill 50364146

Scope of supply

- Punch unit including punch, die, draw stud and counter nut

Item	Punch size A x B mm	Max. Material thickness mm	Operating mode	Individual parts for manual operation		Mounting hole-dia. mm	Complete unit Part No.
				Draw studs	Counter nut		
Special shaped punch for heavy duty connectors, 6-pin, 36 x 52 mm	36.0 x 52.0	3.0	Hydraulic	52046100	52046101	30.2	52033816
Special shaped punch for heavy duty connectors, 10-pin, 36 x 65 mm	36.0 x 65.0	3.0	Hydraulic	52046100	52046101	30.2	52033817
Special shaped punch for heavy duty connectors, 16-pin, 36 x 86 mm	36.0 x 86.0	3.0	Hydraulic	52046100	52046101	30.2	52033818
Special shaped punch for heavy duty connectors, 24-pin, 36 x 91 mm	36.0 x 91.0	3.0	Hydraulic	52046100	52046101	30.2	52033819
Special shaped punch for heavy duty connectors 36 x 112 mm	36.0 x 112.0	3.0	Hydraulic	52046100	52046101	30.2	52033820
Special shaped punch for heavy duty connectors 46 x 86 mm	46.0 x 86.0	3.0	Hydraulic	52046100	52046101	30.2	52033831
Special shaped punch for heavy duty connectors 46 x 112 mm	46.0 x 112.0	3.0	Hydraulic	52046100	52046101	30.2	52033832
Special shaped punch HAN Yellock [®] 30 with 4 centre mark points 47.2 x 56.4 mm	47.2 x 56.4	3.0 / 3.0 VA	Hydraulic	52046100	52046101	30.2	52058591
Special shaped punch HAN Yellock [®] 30 with 4 centre mark points 47.2 x 85.5 mm	47.2 x 85.5	3.0 / 3.0 VA	Hydraulic	52046100	52046101	30.2	52058592



Punching

Round and special shape punches

Draw studs for shaped punch

Order info

- To increase the service life, we recommend greasing the draw studs with Greenlee installation paste no. 50115472
- Sizes given are diameter x length
- Subject to tolerance deviations



Size	Part No.
12.7 x 117 mm	50601660



Size	Part No.
12.7 x 117 mm	50601172



Size	Part No.
9.5 x 93 mm	50601130



Size	Part No.
9.5 x 95 mm	51601160



Size	Part No.
9.5 x 88 mm	52020113



Size	Part No.
6.3 x 87 mm	50601156



Size	Part No.
19 x 171 mm	50601180



Size	Part No.
9.5 x 135 mm	50053043



SAVE TIME AND MONEY - WITH EVERY PUNCH!

From the leaders in knockout technology comes the new SPEED PUNCH™ System. The patent pending “no-thread” design eliminates cross-threading, while the innovative SPEED LOCK mechanism quickly secures the punch in place. This means longer tool life and faster punches, saving you time and money on the job. SPEED PUNCH™ is available in ISO 16 to ISO 63 and PG 16 metric sizes and two kit configurations.



UP TO
3X
FASTER

**SPEED
PUNCH**

▶ Speed Punch - saves time and money

- SPEED LOCK mechanism quickly secures the entire system in place: Punch more holes in less time.
- “No-thread” punch design quickly and easily slides on/off draw stud.
- The fastest punch system on the market today.
- Matched die heights eliminate need for additional spacers.
- Fewer extra parts to lose on the job site.
- No more thread damage and costly down time.

▶ Simplified punching processes

- Standard draw stud end
- Works with your existing hydraulic and battery-operated punch drivers.

LS50 FLEX

- ▶ In combination with the hydraulic punching tool LS 50 Flex it represents the state of the art in performance and speed.





THE ADVANTAGE IN PUNCHING - PUNCHING TOOLS AND SETS

Greenlee punching tools are quick. No matter whether for straight punchings in steel (St37) and stainless steel or confined areas with swivelling head: Greenlee equips you with the right set for every situation. Combined with the Speed Punch, the quickest and most-efficient punching system in our range puts you in pole position. Take the lead in punching!

**NEXT
GENERATION**



In brief

- ▶ Always ready for use due to short battery-charging times
- ▶ Heads rotatable through 360° for optimised work ergonomics
- ▶ No fatigue due to low weight
- ▶ 3x quicker punching with the Speed Punch system



▶ **The fast one: LS 50 FLEX**

The LS 50 FLEX is not just fast. It is integrally designed and produced. It is fully re-charged and ready for use in just 22 minutes. Ergonomic design and a balanced centre of gravity support you when working over long periods of time. The head rotates through 360° and reliably punches in confined areas. Combine the LS 50 FLEX with the Speed Punch system for even faster operations. There's no faster punching than this.

- Can be used for steel (St37) and stainless steel
- Ergonomic design for effortless operations
- Automatic final switch-off for even longer service life of the hole punch
- 22 min. to recharge the battery
- Integrated LED illuminates the work position
- Head rotates through 360°
- Can be combined with Speed Punch punch system for maximum punch speed



Speed Punch video:
youtube.com/watch?v=0LJ7mHEgeow



▶ **Speed Punch set**

Punching is up to three times quicker with the Speed Punch. The threadless stamp profile can be quickly replaced via a clamp technology - no more screwing the counter nut on and off. The set contains everything you need for the Speed Punch.

- Speed Punch set ISO 16 - 63, including accessories for hydraulic activation
- For all standard steel sheet
- High-quality plastic transport case for optimum product protection

▶ **Slug Buster[®] set ISO 16 - 40**

The Slug Buster from Greenlee separates the punch remnants automatically so that they fall from the die by themselves. No jamming or time-consuming removal of the punch remnants. The set comprises all components of the punching system.

- Slug Buster system including accessories
- Including ratchet wrench for manual activation
- Pilot drill included
- High-quality plastic transport case for optimum product protection



Speed Nut complete set



- ▶ Up to 3-times faster than conventional punching tools

Characteristics

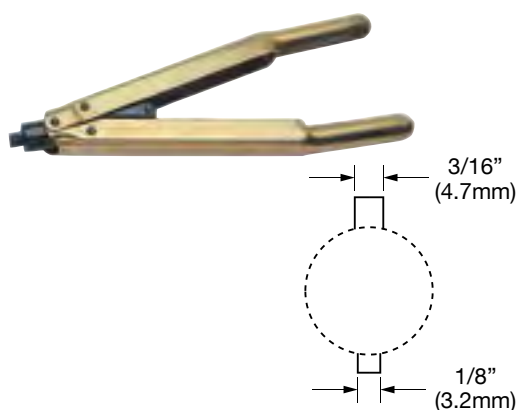
- Compatible with all Greenlee hand-operated and battery powered hydraulic punches
- Easy and quick handling as the screwing up and screwing down of the counter nut is not required

Suitable for

- Square punches from 46 x 46 mm and rectangular punches from 33.3 x 66.7 mm

Item	Part No.	
Speed Nut complete set	SLSN34	
Scope of supply	Part No.	Page
Speed Nut draw stud	SLSNDS34	
Quick-action bayonet coupling	SLSNN34	

Keyway punch



- ▶ Time-saving punching of slots for anti-twist protected parts
- ▶ Long service life

Suitable for

- Mild steel (St37) to 3 mm thick
- Manual operation

Item	Part No.	
Keyway punch	50265342	
Accessories	Part No.	Page
Spare punch for keyway punch	50265369	
Spare die for keyway punch	50265385	

Hydraulic punch driver Quick Draw™ 7804E



- ▶ Ideal for fast, straight-on front panel punching
- ▶ Compact design
- ▶ Very robust

Characteristics

- Hand hydraulic punch driver with straight head

Suitable for

- Special shape punches up to a maximum size of 68 x 68 mm or 35 x 65 mm
- Round punches up to ISO 63 (64 mm dia.)

Additional information

- Accompanying draw studs to 64 mm ST37 are suitable

Technical data		
Dimension	321 x 110 x 70 mm	
Punching force	80 kN	
Weight	2.5 kg	
Item	Part No.	
Quick Draw™ 7804E	50342916	
Scope of supply	Part No.	Page
Hand hydraulic punch 7804E	50342886	
Draw stud for punch with hydraulic operation 9.5 x 71 mm	51300430	
Draw stud for hydraulic operation 19.0 x 105 mm	50318721	
Spacer, short	50032488	
Adapter 19.0 x 48 mm with internal thread 9.5 mm	50339672	426
Plastic case	50352024	



Hydraulic punch Quick Draw 90™ 7904E



- ▶ Ideal for fast, straight-on front panel punching
- ▶ Head rotates 180° for maximum flexibility
- ▶ Very robust

Characteristics

- Compact design
- Hand hydraulic punch driver with 90° head

Suitable for

- Special shape punches up to a maximum size of 68 x 68 mm or 35 x 65 mm
- Round punches up to ISO 63 (64 mm dia.)

Additional information

- Accompanying draw studs to 64 mm ST37 are suitable

Technical data		
Dimension	312 x 110 x 65 mm	
Punching force	80 kN	
Weight	3.4 kg	
Item	Part No.	
Quick Draw 90™ 7904E	50342991	
Scope of supply	Part No.	Page
Hand hydraulic punch 7904E	50337866	
Draw stud for punch with hydraulic operation 9.5 x 71 mm	51300430	
Draw stud for hydraulic operation 19.0 x 105 mm	50318721	426
Spacer, short	50032488	
Adapter 19.0 x 48 mm with internal thread 9.5 mm	50339672	426
Plastic case	50352024	

Manual hydraulic punch



- ▶ Flexible head for multi-purpose use even in confined areas

Characteristics

- Rotatable/Swivel

Suitable for

- Special shape punches up to a maximum size of 68 x 68 mm or 35 x 65 mm
- Round punches up to ISO 63 (64 mm dia.)

Additional information

- Hand-operated hydraulic punch incl. draw stud, pilot drill and spacer in plastic case
- Without hole
- Accompanying draw studs to 64 mm ST37 are suitable

Technical data		
Dimension	340 x 150 x 85 mm	
Punching force	80 kN	
Weight	2.2 kg	
Revolving/rotatable	360°	
Item	Part No.	
Manual hydraulic punch	52033843	
Scope of supply	Part No.	Page
Draw stud for hydraulic operation 9.5 mm to 19 mm, 122 mm	52042827	
HSS Co5 step bit	52049371	
Spacer, short	50032488	
Plastic case		



LS 60-L Battery powered hydraulic punching tool



- ▶ High flexibility using rotating head
- ▶ Automatic stop makes the punching tools last longer
- ▶ Lithium-ion technology allows long operating times and short recharging times

Characteristics

- Electronic control and monitoring of operation
- Simple and safe: One-button operating concept for controlling all tool functions
- Comfortable and secure one-hand operation thanks to 2-component plastic housing with soft grips
- Balanced centre of gravity for easy handling and effortless operations
- LED for work area illumination
- Powerful 18 V Li-Ion battery - high capacity, short charging time
- Energy saving function with motor cut-out after successful operation
- Manual retract as required
- Multifunction LED for maintenance display and charge status display of the battery
- Environmentally-friendly hydraulic oil, quickly biodegradable

Suitable for

- A punch size from 104.8 x 104.8 mm
- Round punch up to 95.3 mm

Technical data	
Punching force	60 kN
Weight	4.0 kg
Battery capacity	RAL2 / BL1830: 3 Ah
Charging time	RAL2 / BL1830: 22 min.
Punching time	5 s at 22.5 mm dia., 3 mm mild steel 12 s at 61.5 mm dia., 3 mm mild steel
Ambient temperature	-15 °C up to +40 °C
Head outside diameter	73 mm
Dimensions	325 x 285 x 80 mm
Punching capacity	90 punches/battery at 22.5 mm dia. and 3.5 mm mild steel 170 punches/battery at 22.5 mm dia. and 2.5 mm mild steel 250 punches/battery at 22.5 mm dia. and 2.5 mm mild steel

Item	Part No.	
LS 60-L Battery powered hydraulic punching tool	LS60L	
Scope of supply	Part No.	Page
Draw stud for punch with hydraulic operation 9.5 x 71 mm	51300430	
Draw stud for hydraulic operation 19.0 x 105 mm	50318721	426
Spacer, short	50032488	
Adapter 19.0 x 48 mm with internal thread 9.5 mm	50339672	426
HSS Co5 step bit	52049371	
KKLS60LGL Plastic case	KKLS60LGL	
Makita quick-charger for 18 V Li-Ion battery	LGL1	494
Makita battery 18 V / 3.0 Ah, Li-Ion (54 Wh)	RAL2	491
Accessories	Part No.	Page
18 V mains adapter for 230 V Voltage	NG2230	376



LS 50 FLEX battery powered hydraulic punching tool

**NEXT
GENERATION**



- ▶ High flexibility using 360° rotating head
- ▶ An integrated pressure sensor increases the service life of the hole punch
- ▶ Automatic stop makes the punching tools last longer

Characteristics

- Choose your battery system: Bosch or Makita
- All data can be easily read via Bluetooth
- Balanced centre of gravity for easy handling and effortless operations
- LED for work area illumination
- Energy saving function with motor cut-out after successful operation
- Manual retract as required
- Always ready-to-use thanks to battery charge and service display

Suitable for

- A punch size from 104.8 x 104.8 mm
- Round punch up to 143.7 mm



Technical data	
Punching force	60 kN
Weight	2.1 kg
Charging time	15 min.
Punching time	5 s at 22.5 mm dia., 3 mm mild steel 6 s at 63.5 mm dia., 3 mm mild steel
Ambient temperature	-15 °C up to +40 °C
Dimensions	340 x 115 x 80 mm
Punching capacity	120 punch operations at 22.5 mm dia., 3.4 mm mild steel 190 punch operations at 22.5 mm dia., 3 mm mild steel 280 punch operations at 22.5 mm dia., 2.5 mm mild steel

Item	Part No. Bosch	Part No. Makita	
LS 50 FLEX battery powered hydraulic punching tool	LS50FLEXCFB	LS50FLEXCFM	
Lieferumfang			Page
Bosch battery 18 V / 2.0 Ah, Li-Ion	RALB1EU		492
Bosch quick-charger for 18 V Li-Ion battery	LGLB1EU		494
Makita battery 18 V / 1.5 Ah, Li-Ion		RAL1	491
Makita quick-charger for 18 V Li-Ion battery		LGL1	494
Draw stud for hydraulic operation 19.0 x 105 mm	50318721	50318721	426
Spacer 22 mm, short	50032488	50032488	
HSS Co5 step bit	52049371	52049371	
Adapter 19.0 x 48 mm with internal thread 9.5 mm	50339672	50339672	426
Draw stud for punch with hydraulic operation 9.5 x 71 mm	51300430	51300430	
Plastic case	KK50LFLEX	KK50LFLEX	
Accessories			Page
Bosch battery 18 V / 5.0 Ah, Li-Ion	RALB2EU		495
Makita battery 18 V / 3.0 Ah, Li-Ion (54 Wh)		RAL2	491



EKM 60 UNV Battery-powered hydraulic universal tool 6 - 300 mm²

**NEXT
GENERATION**



- ▶ One head for crimping, cutting and punching - one tool for all
- ▶ Ideal in the assembly field where all common jobs can be carried out using one tool
- ▶ All tool data on view thanks to display and ipress app
- ▶ Small and slim, perfect for cramped conditions

Characteristics

- Choose your battery system: Bosch or Makita
- All data can be easily read via Bluetooth
- Universal head flip top style, rotatable
- Simple and safe: One-button operating concept for controlling all tool functions
- Effortless working due to balanced centre of gravity
- LED for work area illumination
- Simple and safe: Automatic retraction when operation is complete
- Always ready-to-use thanks to battery charge and service display

Technical instructions

- Interchangeable adapters and dies for crimping, cutting and punching you will find on page 478



**K22
SERIE**

**K18
SERIE**

**K5
SERIE**

Technical data	
Crimping force	60 kN
Stroke	42 mm
Crimping range	6 - 300 mm ²
Crimping cycle	7 s up to 9 s (depending on cross-section)
Cutting range	max. 40 mm dia.
Punching capacity	up to 64 mm dia. round, up to 92 x 92 mm square
Charging time	15 min.
Weight	3.0 kg
Ambient temperature	-10 °C up to +40 °C

Item	Part No. Bosch	Part No. Makita	
Battery-powered hydraulic universal tool 6 - 300 mm ²	EKM60UNVCFB	EKM60UNVCFM	
Scope of supply			Page
Bosch battery 18 V / 2.0 Ah, Li-Ion	RALB1EU		492
Bosch quick-charger for 18 V Li-Ion battery	LGLB1EU		494
Makita battery 18 V / 1.5 Ah, Li-Ion		RAL1	491
Makita quick-charger for 18 V Li-Ion battery		LGL1	494
Adapter for crimping dies of Series 22	UA22	UA22	478
Plastic case 450 x 370 x 105 mm	KKMUNVNG	KKMUNVNG	
Accessories			Page
Bosch battery 18 V / 5.0 Ah, Li-Ion	RALB2EU		493
Makita battery 18 V / 3.0 Ah, Li-Ion (54 Wh)		RAL2	491



**NEXT
GENERATION**

EK 60 UNV Battery-powered hydraulic universal tool 6 - 300 mm²



- ▶ One head for crimping, cutting and punching - one tool for all
- ▶ Ideal in the assembly field where all common jobs can be carried out using one tool
- ▶ Fast working due to 2-stage hydraulics
- ▶ All tool data on view thanks to display and ipress app

Characteristics

- Choose your battery system: Bosch or Makita
- All data can be easily read via Bluetooth
- Universal head flip top style, rotatable
- Simple and safe: One-button operating concept for controlling all tool functions
- Effortless working due to balanced centre of gravity
- LED for work area illumination
- Simple and safe: Automatic retraction when operation is complete
- Always ready-to-use thanks to battery charge and service display

Technical instructions

- Interchangeable adapters and dies for crimping, cutting and punching you will find on page 478

Technical data			
Crimping force	60 kN		
Stroke	42 mm		
Crimping range	6 - 300 mm ²		
Crimping cycle	3 s to 5 s (depending on cross-section)		
Cutting range	max. 40 mm dia.		
Punching capacity	up to 64 mm dia. round		
Charging time	45 min.		
Weight	4.8 kg		
Ambient temperature	-10 °C up to +40 °C		
Item	Part No. Bosch	Part No. Makita	
Battery-powered hydraulic universal tool 6 - 300 mm ²	EK60UNVCFB	EK60UNVCFM	
Scope of supply			Page
Bosch battery 18 V / 5.0 Ah, Li-Ion	RALB2EU		493
Bosch quick-charger for 18 V Li-Ion battery	LGLB1EU		494
Makita battery 18 V / 4.0 Ah, Li-Ion		RAL40	492
Makita quick-charger for 18 V Li-Ion battery		LGL1	494
Plastic case 450 x 370 x 105 mm	UA22	UA22	478
Adapter for crimping dies of Series 22	KK120UNVNG	KK120UNVNG	



EK 120 UNV Battery-powered hydraulic universal tool 10 - 400 mm²

**NEXT
GENERATION**



- ▶ One head for crimping, cutting and punching - one tool for all
- ▶ Ideal in the assembly field where all common jobs can be carried out using one tool
- ▶ All tool data on view thanks to display and ipress app

Characteristics

- Choose your battery system: Bosch or Makita
- All data can be easily read via Bluetooth
- Universal head flip top style, rotatable
- Simple and safe: One-button operating concept for controlling all tool functions
- Effortless working due to balanced centre of gravity
- LED for work area illumination
- Simple and safe: Automatic retraction when operation is complete
- Always ready-to-use thanks to battery charge and service display

Technical instructions

- Interchangeable adapters and dies for crimping, cutting and punching you will find on page 478



**K13
SERIE**

Technical data	
Crimping force	108 kN
Stroke	42 mm
Crimping range	10 - 400 mm ²
Crimping cycle	Depending on cable type
Cutting range	max. 40 mm dia.
Punching capacity	up to 144 mm dia. round, up to 138 x 138 mm square
Charging time	45 min.
Weight	6.5 kg
Ambient temperature	-10 °C up to +40 °C

Item	Part No. Bosch	Part No. Makita	
Battery-powered hydraulic universal tool 10 - 400 mm ²	EK120UNVCFB	EK120UNVCFM	
Scope of supply			Page
Bosch battery 18 V / 5.0 Ah, Li-Ion	RALB2EU		493
Bosch quick-charger for 18 V Li-Ion battery	LGLB1EU		494
Plastic case 450 x 370 x 105 mm	KK120UNVNG	KK120UNVNG	
Adapter for crimping dies	UA12TKL	UA12TKL	478



Hydraulic punch with hand pump



► Compact design

Characteristics

- With hand pump, hose and cylinder

Suitable for

- All punches up to 144.1 mm round and 138 x 138 mm square
- St37 up to 3.5 mm and 3.5 mm V2A (depending on punch size)

Operation

- Hydraulic

Additional information

- When used with Speed Punch use the following draw studs: 52066000 (to ISO 25), 50032488, 52058897 (from ISO 25)

Technical data		
Punching force	110 kN	
Weight	8.3 kg	
Item	Part No.	
Hydraulic punch with hand pump	50159062	
Scope of supply	Part No.	Page
Hydraulic cylinder	50170910	
Draw stud for hydraulic operation 9.5 mm to 19 mm, 122 mm	52042827	
Spacer, short	50032488	
Spacer bush, medium	51032490	
Spacer bush 38 mm, long	50069047	
Kwik Stepper™ step bit 12.7 mm	50344102	466
767 Hydraulic hand pump	50132849	490
Hydraulic hose 6.4 mm dia. x 0.9 m	50383167	498
Draw stud for hydraulic operation 19.0 x 137 mm	52045040	



Punching

Punching tools and sets

Hydraulic punch with foot pump



Characteristics

- With foot pump, hose and cylinder

Suitable for

- Up to 144.1 mm round and 138 x 138 mm square
- St37 up to 3.5 mm and 3.5 mm V2A (depending on punch size)

Operation

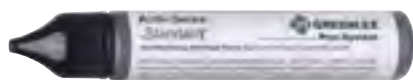
- Hydraulic

Additional information

- When used with Speed Punch use the following draw studs: 52066000 (to ISO 25), 50032488, 52058897 (from ISO 25)

Technical data		
Punching force	110 kN	
Weight	15.2 kg	
Item	Part No.	
Hydraulic punch with foot pump	50250973	
Scope of supply	Part No.	Page
Hydraulic cylinder	50170910	
Spacer, short	50032488	
Spacer bush, medium	51032490	
Spacer bush 38 mm, long	50069047	
Kwik Stepper™ step bit 12.7 mm	50344102	466
1725 Hydraulic foot pump	50313533	490
Hydraulic hose 6.4 mm dia. x 3 m	50377299	498
Draw stud for hydraulic operation 9.5 mm to 19 mm, 122 mm	52042827	
Draw stud for hydraulic operation 19.0 x 137 mm	52045040	

Thread grease



- ▶ Increases the service life
- ▶ Prevents "seizing"
- ▶ Screw and nut threads resistant to wear

Suitable for

- Statically and dynamically high stressed thread connections

Item	Part No.
Draw stud thread grease, 30 g	50115472



Portable C-frame punch driver, 15.2 - 34.6 mm



► Fast, one shot punching - no pre-drilling of pilot holes required

Additional information

- For actuation we recommend hydraulic foot pump 1725, Part No. 50313533, hand pump 767, Part No. 50132849 or pumps EHP4 and AHP700L
- When using the AHP700L adapter CMGSK is required

Technical data

Throat 200 mm

Weight 6.8 kg

Punching capacity up to 3 mm St37

Punching range 15.2 - 34.6 mm

Item	Part No.	
Portable C-frame punch driver 1731	50159119	
Scope of supply	Part No.	Page
Punch adapter 9.5 mm	50132768	
Punch adapter 19 mm	50132776	
Punch Pg 16	51040060	
Punch Pg 21	51040080	
Punch 34.6 mm	50040103	
Die Pg 16 (22.5 mm)	50120875	
Die Pg 21 (28.3 mm)	50120867	
Die 34.6 mm	50120859	
Metal case	50166344	
Accessories	Part No.	Page
Punch Pg 9 (15.2 mm)	50213164	
Die Pg 9 (15.2mm)	50185578	
Punch Pg 11 (18.6 mm)	50177001	
Die Pg 11 (18.6 mm)	50185586	
Punch Pg 13 (20.4 mm)	50176978	
Die Pg 13 (20.4 mm)	50185594	
Punch 30.5 mm (oil-tight)	50362828	
Die 30.5 mm (oil-tight)	50371037	
Die ISO 16	50766421	
Die ISO 20	50766438	
Die ISO 25	50766445	
Die ISO 32	50766452	
Punch ISO 25	50039865	
Punch ISO 32	50244590	



Portable C-frame punch driver, 15.2 - 115.4 mm



Suitable for

- For use with standard punches and dies, punching range 15.2 to 115.4 mm

Additional information

- For actuation we recommend hydraulic hand pump 755, Part No. 50156772 or pumps EHP4 and AHP700L
- When using the AHP700L adapter CMGSK is required

Technical data	
Throat	200 mm
Weight	27 kg
Punching capacity	up to 3 mm St37
Punching range	15.2 to 115.4 mm

Item	Part No.
Portable C-frame punch driver 1732	50273612

Scope of supply	Part No.	Page
Die adapter 9.5 mm	50117912	
Die adapter 19 mm	50117904	
Die adapter 28.6 mm	50117890	
Die adapter 9.5 mm	50132660	
Die adapter 19 mm	50132679	
Die adapter 28.6 mm	50132687	
Hexagonal nut	90542657	
Metal case	50273353	

Accessories	Part No.	Page
Punch Pg 9 (15.2 mm)	50213164	
Die Pg 9 (15.2mm)	50185578	
Punch Pg 11 (18.6 mm)	50177001	
Die Pg 11 (18.6 mm)	50185586	
Punch Pg 13 (20.4 mm)	50176978	
Die Pg 13 (20.4 mm)	50185594	
Punch 30.5 mm (oil-tight)	50362828	
Die 30.5 mm (oil-tight)	50371037	
Die ISO 16	50766421	
Die ISO 20	50766438	
Die ISO 25	50766445	
Die ISO 32	50766452	
Punch ISO 25	50039865	
Punch ISO 32	50244590	



LSK 120 Hydraulic hole punching head - basic tool



- ▶ Fast and precise cutting
- ▶ Punching in just a few seconds
- ▶ Compact design permits working in tight areas

Suitable for

- Aluminium, copper and steel with a tensile strength to 470 N/mm² to 10 mm thick
- Hole diameters: 6.5 - 17 mm
- Centric punching: 120 mm max. material width
- Drive with EHP 4 and AHP 700-L

Additional information

- Drive with EHP 4 and AHP 700-L available; adapter CMGSK required

Technical data		
Max. operating pressure	max. 700 bar	
Max. compressive force	160 kN	
Dimension	234 x 174 x 88 mm	
Weight	9.5 kg	
Item	Part No.	
Hydraulic hole punching head LSK 120	50052110	
Accessories	Part No.	Page
Perforated die 6.5 mm dia.	50052276	480
Punch and die 8.5 mm dia.	50052284	480
Punch and die 11 mm dia.	50052292	480
Punch and die 13 mm dia.	50052306	480
Punch and die 15 mm dia.	50052314	480
Punch and die 17 mm dia.	50052322	480

Slug Buster[®] punch set for all applications from ISO 16 - 40



Suitable for

- Mild steel (St37), plastic and aluminium up to 3.5 mm

Operation

- Manual

Predrilling

- Draw stud 9.5 mm dia., pilot drill 9.7 mm dia. 50360183
draw stud 19.0 mm dia., pilot drill 20.5 mm dia. 50344030

Item	Part No.	
Slug Buster [®] punch set ISO 16 to 40	50366920	
Scope of supply	Part No.	Page
Slug Buster [®] punch set ISO 16/20/25/32/40	50356178SET	454
Draw studs for manual operation 9.5 x 40 mm	50000420	423
Draw studs for manual operation 19.0 x 55 mm	50040405	423
Ratchet	50349414	
Kwik Stepper [™] step bit 9.7 mm	50360183	466
Plastic case	50366858	



Punching

Punching tools and sets

Slug Buster® punch set for all applications from PG 9 to PG 21 and 30.5 mm



Suitable for

- Mild steel (St37), plastic and aluminium up to 3.5 mm

Operation

- Manual

Predrilling

- Draw stud 9.5 mm dia., pilot drill 9.7 mm dia. 50360183
draw stud 19.0 mm dia., pilot drill 20.5 mm dia. 50344030

Item	Part No.	
Slug Buster® punch set PG 9 to PG 21 and 30.5 mm	50366904	
Scope of supply	Part No.	Page
Slug Buster® punch set PG 9 - 21, 30.5 mm	50323989SET	455
Draw studs for manual operation 9.5 x 40 mm	50000420	423
Ratchet	50349414	
Kwik Stepper™ step bit 9.7 mm	50360183	466
Plastic case	50366858	

Slug Buster® punch set for ISO 16 - 63



Suitable for

- Mild steel (St37), plastic and aluminium up to 3.5 mm

Operation

- Manual

Predrilling

- Draw stud 9.5 mm dia., pilot drill 9.7 mm dia. 50360183
draw stud 19.0 mm dia., pilot drill 20.5 mm dia. 50344030

Item	Part No.	
Slug Buster® punch set ISO 16 to 63	50366939	
Scope of supply	Part No.	Page
Slug Buster® punch set ISO 16 - 63	50068920SET	454
Draw studs for manual operation 9.5 x 40 mm	50000420	423
Draw studs for manual operation 19.0 mm x 75 mm	50040421	423
Ratchet	50349414	
Kwik Stepper™ step bit 9.7 mm	50360183	466
Plastic case	50366858	



Slug Buster[®] punch set for all applications from PG 9 - 48 and 30.5 mm



Suitable for

- Mild steel (St37), plastic and aluminium up to 3.5 mm

Operation

- Manual

Predrilling

- Draw stud 9.5 mm dia., pilot drill 9.7 mm dia. 50360183
draw stud 19.0 mm dia., pilot drill 20.5 mm dia. 50344030

Item	Part No.	
Slug Buster [®] punch set PG 9 to PG 48 and 30.5 mm	50366912	
Scope of supply	Part No.	Page
Draw studs for manual operation 9.5 x 40 mm	50000420	423
Draw studs for manual operation 19.0 x 55 mm	50040405	423
Ratchet	50349414	
Slug Buster [®] punch set PG 9 - 48, 30.5 mm	50328034SET	455
Plastic case	50366858	

Speed Punch[™] Set ISO 16 – 40



- ▶ Up to 3-times faster than conventional punching tools
- ▶ Easy and quick handling as the screwing and unscrewing of the counter nut is not required
- ▶ Compatible with all Greenlee hand-operated and battery powered hydraulic tools
- ▶ No greasing of the draw stud required

Suitable for

- Mild steel (St37), plastic and aluminium up to 3.5 mm

Operation

- Hydraulic

Predrilling

- Draw stud 9.5 mm dia., pilot drill 9.7 mm dia. 50360183
draw stud 19.0 mm dia., pilot drill 20.5 mm dia. 50344030

Scope of supply

- Complete system including draw stud, cramp, punch and die incl. plastic case

Item	Part No.	
Speed Punch [™] punch set ISO 16/20/25/32/40	52055439SET	
Scope of supply	Part No.	Page
Punch and die ISO 16 (16.2 mm)	52055431	422
Punch and die ISO 20 (20.4 mm)	52055432	422
Punch and die ISO 25 (25.4 mm)	52055434	422
Punch and die ISO 32 (32.5 mm)	52055435	422
Punch and die ISO 40 (40.5 mm)	52055436	422
Speed Lock and draw stud 9.5 mm for ISO 16/20/25 and PG 16	52055439	422
Speed Lock and draw stud 19.0 mm for ISO 32/40/50/63	52055440	422
Plastic case	KKSPISO16B63	
Accessories	Part No.	Page
Plastic case	KKSPISO16B63	



Speed Punch™ Set ISO 16 – 63



- ▶ Up to 3-times faster than conventional punching tools
- ▶ Easy and quick handling as the screwing and unscrewing of the counter nut is not required
- ▶ Compatible with all Greenlee hand-operated and battery powered hydraulic tools
- ▶ No greasing of the draw stud required

Suitable for

- Mild steel (St37), plastic and aluminium up to 3.5 mm

Operation

- Hydraulic

Predrilling

- Draw stud 9.5 mm dia., pilot drill 9.7 mm dia. 50360183
draw stud 19.0 mm dia., pilot drill 20.5 mm dia. 50344030

Scope of supply

- Complete system including draw stud, cramp, punch and die incl. plastic case

Item	Part No.	
Speed Punch™ Set ISO 16 – 63	52055440SET	
Scope of supply	Part No.	Page
Punch and die ISO 16 (16.2 mm)	52055431	422
Punch and die ISO 20 (20.4 mm)	52055432	422
Punch and die ISO 25 (25.4 mm)	52055434	422
Punch and die ISO 32 (32.5 mm)	52055435	422
Punch and die ISO 40 (40.5 mm)	52055436	422
Punch and die ISO 50 (50.8 mm)	52055437	422
Punch and die ISO 63 (64.0 mm)	52055438	422
Speed Lock and draw stud 9.5 mm for ISO 16/20/25 and PG 16	52055439	422
Speed Lock and draw stud 19.0 mm for ISO 32/40/50/63	52055440	422
Plastic case	KKSPISO16B63	
Accessories	Part No.	Page
Plastic case	KKSPISO16B63	



Slug-Splitter[®] punch set (stainless steel) ISO 16 - 40



- ▶ Unique punch profile
- ▶ Split slugs fall free and can be removed easily

Suitable for

- Stainless steel (V2A), mild steel (St37), plastic and aluminium up to 3.5 mm thick

Operation

- Hydraulic

Predrilling

- Draw stud 19 mm dia., pilot drill 20.5 mm dia. 50344030
draw stud 11.1 mm dia., pilot drill 12.7 mm dia. 50344102

Item	Part No.	
Slug-Splitter [®] punch set (stainless steel) ISO 16/20/25/32/40	50766803	
Scope of supply	Part No.	Page
Slug-Splitter [®] punch (stainless steel) 16.2 mm	50069527	421
Slug-Splitter [®] punch (stainless steel) 20.4 mm	50069543	421
Slug-Splitter [®] punch (stainless steel) 25.4 mm	50069560	421
Slug-Splitter [®] punch (stainless steel) 32.5 mm	50069594	421
Slug-Splitter [®] punch (stainless steel) 40.5 mm	50069616	421
Draw stud for hydraulic operation 11.1 mm to 19 mm, 108 mm	50294512	424
Draw stud for hydraulic operation 19 x 140 mm	50294520	424
Plastic case	KKSSISO16B63	

Slug-Splitter[®] punch set (stainless steel) ISO 16 - 63



- ▶ Unique punch profile
- ▶ Split slugs fall free and can be removed easily

Suitable for

- Stainless steel (V2A), mild steel (St37), plastic and aluminium up to 3.5 mm thick

Operation

- Hydraulic

Predrilling

- Draw stud 19 mm dia., pilot drill 20.5 mm dia. 50344030
draw stud 11.1 mm dia., pilot drill 12.7 mm dia. 50344102

Item	Part No.	
Slug-Splitter [®] punch set (stainless steel) ISO 16/20/25/32/40/50/63	50766797	
Scope of supply	Part No.	Page
Slug-Splitter [®] punch (stainless steel) 16.2 mm	50069527	421
Slug-Splitter [®] punch (stainless steel) 20.4 mm	50069543	421
Slug-Splitter [®] punch (stainless steel) 25.4 mm	50069560	421
Slug-Splitter [®] punch (stainless steel) 32.5 mm	50069594	421
Slug-Splitter [®] punch (stainless steel) 40.5 mm	50069616	421
Slug-Splitter [®] punch (stainless steel) 50.8 mm	50069632	421
Slug-Splitter [®] punch (stainless steel) 64 mm	50069667	421
Draw stud for hydraulic operation 11.1 mm to 19 mm, 108 mm	50294512	424
Draw stud for hydraulic operation 19 x 140 mm	50294520	424
Plastic case	KKSSISO16B63	





Slug Buster® hand hydraulic punch driver set PG 9 - PG 21, 30.5 mm



Suitable for

- Mild steel (St37), plastic and aluminium up to 3.5 mm

Operation

- Hydraulic

Predrilling

- Draw stud 9.5 mm dia., pilot drill 9.7 mm dia. 50360183
draw stud 19.0 mm dia., pilot drill 20.5 mm dia. 50344030

Item	Part No.	
Slug Buster® hand hydraulic punch driver set PG 9 to PG 21 and 30.5 mm	50356119SET	
Scope of supply	Part No.	Page
Hand hydraulic punch 7804E	50342886	
Draw stud for punch with hydraulic operation 9.5 x 71 mm	51300430	
Draw stud for hydraulic operation 19.0 x 105 mm	50318721	424
Spacer, short	50032488	
Adapter 19.0 x 48 mm with internal thread 9,5 mm	50339672	426
Slug Buster® punch set PG 9 - 21, 30.5 mm	50323989SET	455
Plastic case	50352024	

Slug Buster® hand hydraulic 90° punch driver set PG 9 - PG 21, 30.5 mm



Suitable for

- Mild steel (St37), plastic and aluminium up to 3.5 mm thick

Operation

- Hydraulic

Predrilling

- Draw stud 9.5 mm dia., pilot drill 9.7 mm dia. 50360183
draw stud 19.0 mm dia., pilot drill 20.5 mm dia. 50344030

Item	Part No.	
Slug Buster® hand hydraulic punch driver set PG 9 to PG 21 and 30.5 mm	50356151SET	
Scope of supply	Part No.	Page
Hand hydraulic punch 7904E	50337866	
Draw stud for punch with hydraulic operation 9.5 x 71 mm	51300430	
Draw stud for hydraulic operation 19.0 x 105 mm	50318721	424
Spacer, short	50032488	
Adapter 19.0 x 48 mm with internal thread 9,5 mm	50339672	426
Slug Buster® punch set PG 9 - 21, 30.5 mm	50323989SET	455
Plastic case	50352024	



Slug Buster[®] hand hydraulic punch driver set ISO 16 - 40



Suitable for

- Mild steel (St37), plastic and aluminium up to 3.5 mm thick

Operation

- Hydraulic

Predrilling

- Draw stud 9.5 mm dia., pilot drill 9.7 mm dia. 50360183
draw stud 19.0 mm dia., pilot drill 20.5 mm dia. 50344030

Item	Part No.	
Slug Buster [®] hand hydraulic punch driver set ISO 16 to 40	50356143SET	
Scope of supply	Part No.	Page
Hand hydraulic punch 7804E	50342886	
Draw stud for punch with hydraulic operation 9.5 x 71 mm	51300430	
Draw stud for hydraulic operation 19.0 x 105 mm	50318721	424
Spacer, short	50032488	
Adapter 19.0 x 48 mm with internal thread 9,5 mm	50339672	426
Slug Buster [®] punch set ISO 16/20/25/32/40	50356178SET	454
Plastic case	50352024	

Slug Buster[®] hand hydraulic 90° punch driver set ISO 16 - 40



Suitable for

- Mild steel (St37), plastic and aluminium up to 3.5 mm thick

Operation

- Hydraulic

Predrilling

- Draw stud 9.5 mm dia., pilot drill 9.7 mm dia. 50360183
draw stud 19.0 mm dia., pilot drill 20.5 mm dia. 50344030

Item	Part No.	
Slug Buster [®] hand hydraulic punch driver set ISO 16 to 40	50356160SET	
Scope of supply	Part No.	Page
Hand hydraulic punch 7904E	50337866	
Draw stud for punch with hydraulic operation 9.5 x 71 mm	51300430	
Draw stud for hydraulic operation 19.0 x 105 mm	50318721	426
Spacer, short	50032488	
Adapter 19.0 x 48 mm with internal thread 9,5 mm	50339672	426
Slug Buster [®] punch set ISO 16/20/25/32/40	50356178SET	454
Plastic case	50352024	



Punching

Punching tools and sets

Hand hydraulic punching set 90° ISO 16 - 40



- ▶ Flexible head for multi-purpose use even in confined areas

Suitable for

- Special shape punches up to a maximum size of 68 x 68 mm or 35 x 65 mm
- Round punches up to ISO 63 (64 mm dia.)

Item	Part No.	
Hand hydraulic punching set ISO 16 - 40	52034233	
Scope of supply	Part No.	Page
Slug Buster® punch set ISO 16/20/25/32/40	50356178SET	454
Draw stud for hydraulic operation 9.5 mm to 19 mm, 122 mm	52042827	
Draw stud for hydraulic operation 19.0 x 105 mm	50318721	426
Spacer, short	50032488	
HSS Co5 step bit	52049371	
Plastic case	Kunststoffkoffer	

Slug Buster® punch set ISO 16 – 40



- ▶ For quick, clean, effortless and burr-free holes
- ▶ Split slugs fall free and can be removed easily

Suitable for

- Mild steel (St37), plastic and aluminium to 3.0 mm

Operation

- Manual

Predrilling

- Draw stud 9.5 mm dia., pilot drill 9.7 mm dia. 50360183
- draw stud 19.0 mm dia., pilot drill 20.5 mm dia. 50344030

Scope of supply

- Complete system including punch and die incl. plastic case

Additional information

- A case is not included in scope of supply, this must be ordered separately

Item	Part No.	
Slug Buster® punch set ISO 16/20/25/32/40	50356178SET	
Accessories	Part No.	Page
Plastic case	KKISO16B63	

Slug Buster® punch set ISO 16 – 63



- ▶ Long product life
- ▶ Very easy to use

Suitable for

- Mild steel (St37), plastic and aluminium up to 3.5 mm

Operation

- Manual

Predrilling

- Draw stud 9.5 mm dia., pilot drill 9.7 mm dia. 50360183
- draw stud 19.0 mm dia., pilot drill 20.5 mm dia. 50344030

Scope of supply

- Complete system including punch and die incl. plastic case

Item	Part No.	
Slug Buster® punch set ISO 16/20/25/32/40/50/63	50068920SET	
Accessories	Part No.	Page
Plastic case	KKISO16B63	



Slug Buster[®] punch set PG 9 - 21, 30.5 mm



- ▶ Unique punch profile
- ▶ Split slugs fall free and can be removed easily

Suitable for

- Mild steel (St37), plastic and aluminium up to 3.5 mm

Operation

- Manual

Predrilling

- Draw stud 9.5 mm dia., pilot drill 9.7 mm dia. 50360183
draw stud 19.0 mm dia., pilot drill 20.5 mm dia. 50344030

Scope of supply

- Complete system including punch and die incl. plastic case

Item	Part No.	
Slug Buster [®] punch set PG 9/11/13/16/21 and 30.5 mm	50323989SET	
Accessories	Part No.	Page
Plastic case	KKPG9B48	

Slug Buster[®] punch set PG 9 - PG 48, 30.5 mm



- ▶ Unique punch profile
- ▶ Split slugs fall free and can be removed easily

Suitable for

- Mild steel (St37), plastic and aluminium up to 3.5 mm

Operation

- Manual

Predrilling

- Draw stud 9.5 mm dia., pilot drill 9.7 mm dia. 50360183
draw stud 19.0 mm dia., pilot drill 20.5 mm dia. 50344030

Scope of supply

- Complete system including punch and die incl. plastic case

Item	Part No.	
Slug Buster [®] punch set PG 9/11/13/16/21/29/36/48 and 30.5 mm	50328034SET	
Accessories	Part No.	Page
Plastic case	KKPG9B48	



FOR DEEP INCISIONS - HOLE SAWS

Clear the way for cables and electrical connections. Our Greenlee hole saws offer a long-term precise solution. Reinforced back plate reduces vibrations. Saving you effort and ensuring precise concentricity. HSS bi-metal hole saws are suitable for processing steel sheet, cast iron, brass and other materials.



In brief

- ▶ Reduced vibrations thanks to reinforced back plate
- ▶ Long service life due to high-performance steel
- ▶ Suitable for numerous materials
- ▶ For multi-functional use, please note our universal tools



▶ **HSS bi-metal hole saws**

No material is safe from the HSS bi-metal hole saws. Very hard high-performance steel (M 42) for clean and reliable prolonged operation.

- Precise cut with positive pitch
- Reinforced back plate reduces vibrations
- High true running accuracy

- Cooling slots for low heat build-up
- Saws up to a cut depth of of 41.3 mm
- Improved service life due to tooth hardness Rc65-68
- Suitable for steel sheet, cast iron, brass, fibreglass, wood and plastic



▶ **Set of hole saws: HSS bi-metal hole saw set**

The hole saw set gives you all standard sizes tidily combined. Well sorted and perfectly protected.

- All standard sizes of hole saws
- Manufactured from M42 high-performance steel
- Including accessories
- Securely stowed in a robust case



HSS Bi-metal hole saws



- ▶ Vibration-reduction and high true running accuracy due to thick back section
- ▶ High-quality serration easily assured, precise cut
- ▶ Cooling slots ensure low heat build-up
- ▶ No canting when sawing

Characteristics

- High-quality, rake variable pitch design provides faster, easier cutting
- High true running accuracy
- Max. cutting depth 41.3 mm
- Tooth hardness Rc 65 - 68

Suitable for

- Mild steel, cast iron, brass, aluminium, fibreglass, wood and plastic

Additional information

- Arbors have to be ordered separately, not included in scope of supply

Punch size mm	Standard size Pg	Standard size ISO	Weight g	Recommended cutting speed r.p.m. for						Part No.
				steel sheet	tool and stainless steel	cast iron	non-ferrous metal	aluminium	wood	
14			46	580	300	400	790	900	800	50191314
15			46	580	300	400	790	900	800	52057722
16	Pg 9	ISO 16	46	550	275	365	730	825	760	52057723
17			46	500	250	330	665	750	720	52057724
18			46	500	250	330	665	750	720	52057725
19	Pg 11		46	460	230	300	600	690	680	52057726
20		ISO 20	46	445	220	290	580	660	640	52057727
21	Pg 13		46	425	195	280	560	635	580	52057728
22	Pg 16		46	390	195	260	520	585	560	52057729
23			46	380	190	250	510	570	540	52057730
24			46	370	185	245	494	555	520	52057731
25		ISO 25	46	350	175	235	470	525	500	52057732
26			46	325	160	215	435	480	500	52057733
27			46	300	150	200	400	450	450	52057734
28			46	300	150	200	400	450	450	52057735
29	Pg 21		91	285	145	190	380	425	430	52057736
30			91	270	140	180	360	410	410	52057737
32		ISO 32	91	270	140	180	360	410	410	52057738
33			46	250	125	165	330	375	370	52057739
35			46	240	120	160	315	360	30	52057740
36			91	240	120	160	315	360	30	52057741
37	Pg 29		91	230	115	150	300	345	330	52057742
38			91	220	110	145	290	330	310	52057743
40		ISO 40	91	210	110	140	280	315	290	52057744
41			91	205	105	135	270	305	270	52057745
42			137	205	105	135	270	305	270	52057746
43			91	195	100	130	260	295	250	52057747
44			91	190	95	125	250	285	230	52057748
45			91	190	95	125	250	285	230	52057749
46			137	180	90	120	240	270	210	52057750
48	Pg 36		91	180	90	120	240	270	210	52057751
50		ISO 50	91	170	85	115	230	255	200	52057752
51			137	165	80	110	220	245	200	52057753



Punch size mm	Standard size Pg	Standard size ISO	Weight g	Recommended cutting speed r.p.m. for						Part No.
				steel sheet	tool and stainless steel	cast iron	non-ferrous metal	aluminium	wood	
53			137	160	80	105	210	240	190	52057755
54	Pg 42		137	160	80	105	210	240	190	52057756
55			137	150	75	100	200	225	185	52057757
57			227	150	75	100	195	225	185	52057758
59			137	140	70	95	190	220	180	52057760
60	Pg 48		137	135	70	90	180	205	180	52057761
63		ISO 63	182	130	65	85	175	200	175	52057762
64			182	130	65	85	175	200	175	52057801
65			182	130	65	85	170	195	170	52057763
67			182	125	60	80	160	185	165	52057764
68			182	125	60	80	160	185	160	52057765
70			182	120	55	80	160	180	160	52057766
73			182	115	55	75	150	170	150	52057767
74			182	115	55	75	150	170	150	52057768
75			227	115	55	75	150	170	150	52057769
76			227	110	55	70	140	165	145	52057770
79			227	120	55	70	140	165	165	52057802
80			227	110	55	70	140	165	145	52057771
83			273	105	50	70	140	155	140	52057773
86			273	100	50	65	130	150	135	52057774
89			273	95	45	65	130	145	130	52057775
92			273	95	45	60	120	130	120	52057776
95			318	95	45	60	120	135	110	52057777
98			318	90	40	60	120	135	110	52057778
102			318	85	10	55	110	130	100	52057779
105			363	80	40	55	110	120	110	50191772
108			363	80	40	55	110	120	110	50191780
111			363	80	40	50	100	120	110	50191799
114			409	75	40	50	100	105	100	50191802
121			499	75	35	50	95	95	100	50191810
127			545	65	35	45	90	90	100	50191829
140			545	60	35	35	85	85	100	50191837
152			636	55	35	35	75	75	100	50191845
168			701	55	35	35	68	65	100	52057803
177			728	55	35	35	65	65	100	52057804
210			820	55	35	25	55	55	100	52057805



HSS Bi-metal hole saw set



- ▶ Saves time thanks to low vibration and heat development
- ▶ Variable pitch for an uniform cut
- ▶ Requires minimal effort when drilling

Characteristics

- High true running accuracy
- Less effort when cutting

Suitable for

- Metal, brass, fibreglass, non-ferrous metal, cast iron, aluminium, wood and plastics, stainless steel sheet

Item	Part No.
HSS bi-metall hole saw set Elektro II	52059292SET
HSS bi-metal universal hole saw set	52059293SET
HSS bi-metal hole saw set ISO 16 to 63	50069497SET
HSS bi-metal plumbing hole saw set	52059294SET
HSS bi-metal hole saw set (830 PG)	50292099SET
HSS bi-metal electrical hole saw set	52059295SET
Electro set with countersink 35/68/75 mm	50125630SET

Description	Nominal size mm	Standard size		Hole set						
		Pg	ISO	52059292SET Elektro II	52059293SET Universal	50069497SET ISO 16-63	52059294SET Plumbing	50292099SET 830PG	52059295SET Standard	50125630SET Elektro
Bi-metal hole saw	16	Pg 9			●			●	●	
	17		ISO 16			●				
	19	Pg 11			●		●	●	●	
	21	Pg 13	ISO 20			●		●		
	22	Pg 16		●	●			●	●	
	24						●			
	25		ISO 25		●	●				
	29	Pg 21		●	●		●	●	●	
	30							●		
	33		ISO 32			●				
	35			●	●				●	●
	37	Pg 29						●		
	38				●		●			
	41		ISO 40			●				
	44			●	●		●		●	
	48	Pg 36						●		
	51		ISO 50	●	●	●				
	52								●	
	57						●		●	
	60	Pg 48						●		
	63		ISO 63	●	●	●				
	67						●		●	
	68			●						●
	75									●
	76				●					
Countersink for Hole Saw 68 mm										●
Arbor 14 to 30 mm				●	●	●	●	●	●	
Arbor 32 to 152 mm				●	●	●	●	●	●	●
Case				●	●	●	●	●	●	●



Electro set with countersink



Characteristics

- Countersink with two specially-hardened cutting teeth

Suitable for

- Steel, non-ferrous metal, aluminium, cast iron, stainless steel, wood, plastic and building materials

Scope of supply

- Consisting of hole saws 35 mm, 68 mm, 75 mm, countersink for 68 mm hole saw, arbor with pilot drill and counter nut for hole saws 32 - 152 mm and spare HSS pilot drill 6.35 mm dia.

Item	Part No.	
Electro set with countersink 35/68/75 mm	50125630SET	
Scope of supply	Part No.	Page
HSS bi-metal hole saw 35 mm	52057740	458
HSS bi-metal hole saw 68 mm	52057765	459
HSS bi-metal hole saw 75 mm	52057769	459
Countersink for hole saws	52033839	
Arbor for HSS bi-metal hole saws 8.6 mm	52057781	462
Plastic case	52059258	



Arbor for HSS bi-metal hole saws 14 - 30 mm

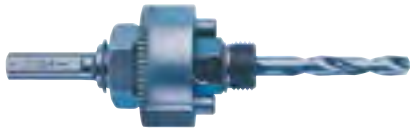


Suitable for

- Sizes from 14 - 30 mm

Item	Part No.
Arbor 6.3 mm	50371576
Arbor for HSS bi-metal hole saws 7.9 mm	50385224
Arbor 8.6 mm	52057780
Arbor 11.1 mm	50371550

Arbor for HSS bi-metal hole saws 32 - 152 mm



Suitable for

- Sizes from 32 - 51 mm
- Sizes from 32 - 152 mm

Item	Part No.
Arbor 7.9 mm for HSS bi-metal hole saws 32 - 51 mm	50371541
Arbor 8.6 mm for HSS bi-metal hole saws 32 - 152 mm	52057781
Arbor 11.1 mm for HSS bi-metal hole saws 32 - 152 mm	50371568

SDS arbor for HSS bi-metal hole saws



Suitable for

- Sizes from 32 - 152 mm
- Sizes from 14 - 30 mm

Item	Part No.
SDS arbor for HSS bi-metal hole saws 14 - 30 mm	50069691
SDS arbor for HSS bi-metal hole saws 32 - 152 mm	50069292

Replaceable pilot drill for arbor HSS bi-metal hole saws



Item	Part No.
Replaceable pilot drill for arbor HSS bi-metal hole saws	52057782





SIMPLE DRILLING – EVERYTHING IN ONE OPERATION

Greenlee bits are produced using the latest CNC technology. The benefit to you is clear: Clean cutting edges produce longer and better cutting operations from the very first use. That saves you effort. The two-sided deburring of the edge breaker saves you time. The Rotastop system on the shank prevents the bit from slipping through in the chuck. That's how drilling is done today.



In brief

- ▶ Perfect cutting performance in the first pass
- ▶ Rotastop prevents the bit slipping through
- ▶ Split point requires less effort



► Kwik Stepper with Rotastop

Years of experience and development have gone into this bit. The Kwik Stepper drills not only burr-free with optimum swarf removal, the spiral groove also reduces heat build-up during the drilling operation. This makes the Kwik Stepper especially durable. The Rotastop system holds the bit in place - without slipping through. Additionally, the split point reduces your effort during the drilling operation. Great performance from just one bit.

- All required drilling ranges in one tool
- Rotastop for maximum torque transmission
- Quick bit change
- No slipping through in the chuck
- Spiral groove for improved cutting performance
- Two-sided burr removal
- Can be used for sheet, pipes, non-ferrous metals, stainless steel and plastics

► Performance in the set: Kwik Stepper set of step bits

To keep you flexible while drilling, we have combined all standard step bits in a practical set and accommodated them in a robust plastic box. Everything to hand.

- All common step bits
- Clear assignment of the bit through laser scaling of the step bit
- Robust plastic box with integrated pop-up hinge
- Easy to transport and store



Kwik Stepper™ step bit



- ▶ Minimum burr
- ▶ Long service life
- ▶ Good torque transmission
- ▶ Less effort when drilling

Suitable for

- Sheet, pipe, NF metal and plastic

Item	Drilling range dia. mm	Step sizes dia. mm	Total length mm	Number of steps	Shank dia. mm	Part No.
Kwik Stepper™ step bit 3.2 - 12.7 mm	3.2 - 12.7	3.2 / 4.0 / 4.8 / 5.6 / 6.4 / 7.1 / 7.9 / 8.7 / 9.5 / 10.3 / 11.1 / 11.9 / 12.7	80	13	6.34	50344013
Kwik Stepper™ step bit 4.8 - 12.7 mm	4.8 - 12.7	4.8 / 6.4 / 7.9 / 9.5 / 11.1 / 12.7	80	6	6.4	50364022
Kwik Stepper™ step bit 22.2 mm	22.2	22.2	85	1	9.5	50344110
Kwik Stepper™ step bit 4.8 - 22.2 mm	4.8 - 22.2	4.8 / 6.4 / 7.9 / 9.5 / 11.1 / 12.7 / 14.3 / 15.9 / 17.5 / 19.1 / 20.6 / 22.2	85	12	9.5	50344030
Kwik Stepper™ step bit 12.7 - 28.6 mm	12.7 - 28.6	12.7 / 22.2 / 28.6	57	3	9.5	50300083
Kwik Stepper™ step bit 22.2 - 34.9 mm	22.2 - 34.9	22.2 / 28.6 / 31.0 / 31.8 / 34.9	73	5	9.5	50364146
Kwik Stepper™ step bit 9.7 mm	9.7	Predrilling for Green- lee-Draw stud 9.7	40	1	6.4	50360183
Kwik Stepper™ step bit 12.7 mm	12.7	Predrilling for Green- lee-Draw stud 12.7	40	1	6.4	50344102
Kwik Stepper™ step bit Pg 7 - 21	Pg 7 - 21	Pg7 / Pg9 / Pg11 / Pg13 / Pg16 / Pg21	90	7	9.5	50360205
Kwik Stepper™ step bit ISO 16 - 32	ISO 16 - 32	ISO 16 / 20 / 25 / 32	80	4	9.5	50360221



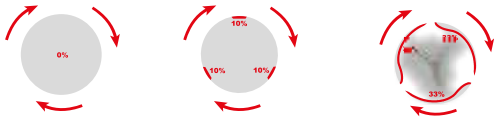
Kwik Stepper™ step bit with ROTASTOP® shaft



- ▶ ROTASTOP® guarantees best-possible torque transmission
- ▶ Minimal burr
- ▶ No slipping in the chuck with ROTASTOP®
- ▶ Long service life
- ▶ Requires minimum effort when drilling

Suitable for

- Reaming of steel sheets, pipes, non-ferrous metals and plastic



Item	Drilling range dia. mm	Step sizes dia. mm	Total length mm	Number of steps	Shank dia. mm	Part No.
Kwik Stepper™ step bit with ROTASTOP® shaft 4 - 12 mm	4 – 12	4.0 / 5.0 / 6.0 / 7.0 / 8.0 / 9.0 / 10.0 / 11.0 / 12.0	80	9	8.0	50069845
Kwik Stepper™ step bit with ROTASTOP® shaft 4 - 20 mm	4 – 20	4.0 / 6.0 / 8.0 / 10.0 / 12.0 / 14.0 / 16.0 / 18.0 / 20.0	67	9	8.0	50069853
Kwik Stepper™ step bit with ROTASTOP® shaft 6 - 30 mm	6 – 30	6.0 / 8.0 / 10.0 / 12.0 / 14.0 / 16.0 / 18.0 / 20.0 / 22.0 / 24.0 / 26.0 / 28.0 / 30.0	98	13	10.0	50069861
Kwik Stepper™ step bit with ROTASTOP® shaft 6 - 36 mm	6 – 36	6.0 / 9.0 / 12.0 / 15.0 / 18.0 / 21.0 / 24.0 / 27.0 / 30.0 / 33.0 / 36.0	85	11	12.0	50069870
Kwik Stepper™ step bit with ROTASTOP® shaft ISO 12 - 40 mm	ISO 12 - 40	For ISO 12 / 16 / 20 / 25 / 32 / 40	110	6	12.0	50069888

Kwik Stepper™ step bit set



- ▶ ROTASTOP® guarantees best-possible torque transmission
- ▶ Hardly any burr
- ▶ No slipping in the chuck with ROTASTOP®
- ▶ Long service life
- ▶ Requires minimal effort when drilling

Suitable for

- Reaming of steel sheets, pipes, non-ferrous metals and plastic

Item	Part No.	
Kwik Stepper™ step bit set	50069900	
Scope of supply	Part No.	Page
Kwik Stepper™ step bit with ROTASTOP® shaft 4 - 12 mm	50069845	467
Kwik Stepper™ step bit with ROTASTOP® shaft 4 - 20 mm	50069853	467
Kwik Stepper™ step bit with ROTASTOP® shaft 6 - 30 mm	50069861	467

Combi bit set in plastic cassette M 3 - M 10



- ▶ Drill, tap and deburr in one operation

Suitable for

- For use with St37, non-ferrous metals and plastics

Item	Part No.	
Combi bit set in plastic cassette M 3 - M 10	50116304	
Scope of supply	Part No.	Page
Combi bit M3	50116312	
Combi bit M4	50116320	
Combi bit M5	50116339	
Combi bit M6	50116347	
Combi bit M8	50116355	
Combi bit M10	50116363	
Combi bit holder	50116371	

