

## Stabilus Lift-O-Mat gas springs

Linear Motion Technology > Stabilus Lift-O-Mat gas springs



**SKU:**

**Description:**

04095001

Stabilus Lift-O-Mat Gas

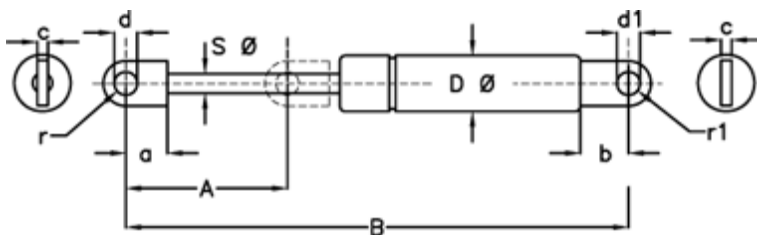
Spring 095001 1150N

03 10 195 1150

Eyelet/Eyelet

<https://www.klee.dk/en/products/04095001>

### Measurements



Product drawings and brochures of any kind may contain errors for which Brd. Klee A/S cannot be liable.

A	=	195
a	=	15
b	=	16.5
B	=	485 +/-2
c	=	5
d1 <sup>-</sup>	=	8,1 +0,3
D <sup>-</sup>	=	22
d <sup>-</sup>	=	8,1 +0,3
Fixing	=	Øje/Øje
Note	=	-
Note	=	-
r	=	7.5
r1	=	7.5
S <sup>-</sup>	=	10

Material: Metal