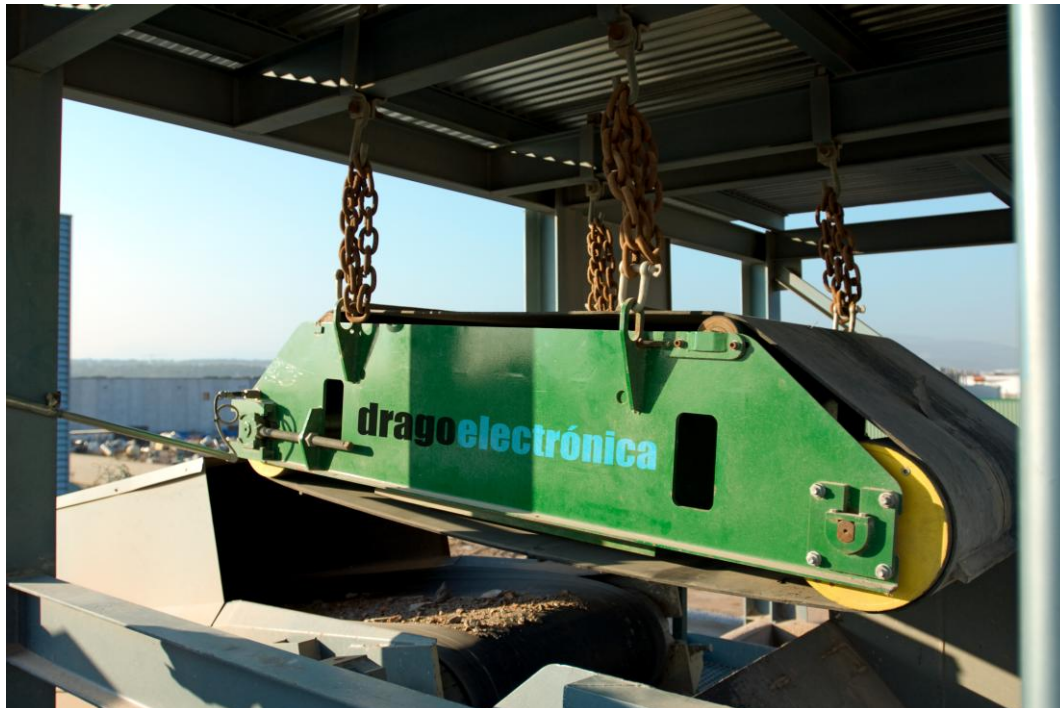


OVERBAND WITH ELECTROMAGNET TYPE ODEP.

INSTALLATION OVER CONVEYOR BELT.

QUARRY INDUSTRY, CEMENT INDUSTRY, RECYCLING INDUSTRY, CERAMIC INDUSTRY, AND OTHER INDUSTRIES.



TYPE	: ODEP
WIDE BELT	: From 400 mm. to 1.800 mm.
INSTALATION	: Suspended over Conveyor Belt. Across or on-line installation from the conveyor belt. Structure to be hanged over the belt: not included. Supplied with 4 lift up rings to be hanged.
FREE METAL ZONE	: All the bottom size of the magnet.
POWER SUPPLY	: Electromagnet: 380 V. 50 Hz. Motor-drive Conveyor belt 380 V. 50 Hz.
POWER MOTOR DRIVE	: Variable; depending the power required.
AMBIENT TEMP.	: - 10 to + 50° C
PRODUCT TEMP.	: - 10 to + 70° C

PROTECTION : IP 67

CONSTRUCTIONFEATURES: Structure created in iron with lateral U shape.
4 male M16 eyebolts for its suspension.
NSK rollers UKT210 type with AISI 304 stainless steel tighteners.
Auxiliary rollers above 320 mm. Ø with fixed axis
Mounted in NSK-UCP 206 supports, with AISI 304 stainless steel centred tighteners.

WORK DISTANCE : De 0 a 700 mm. (from the Belt bottom to the electro magnet).

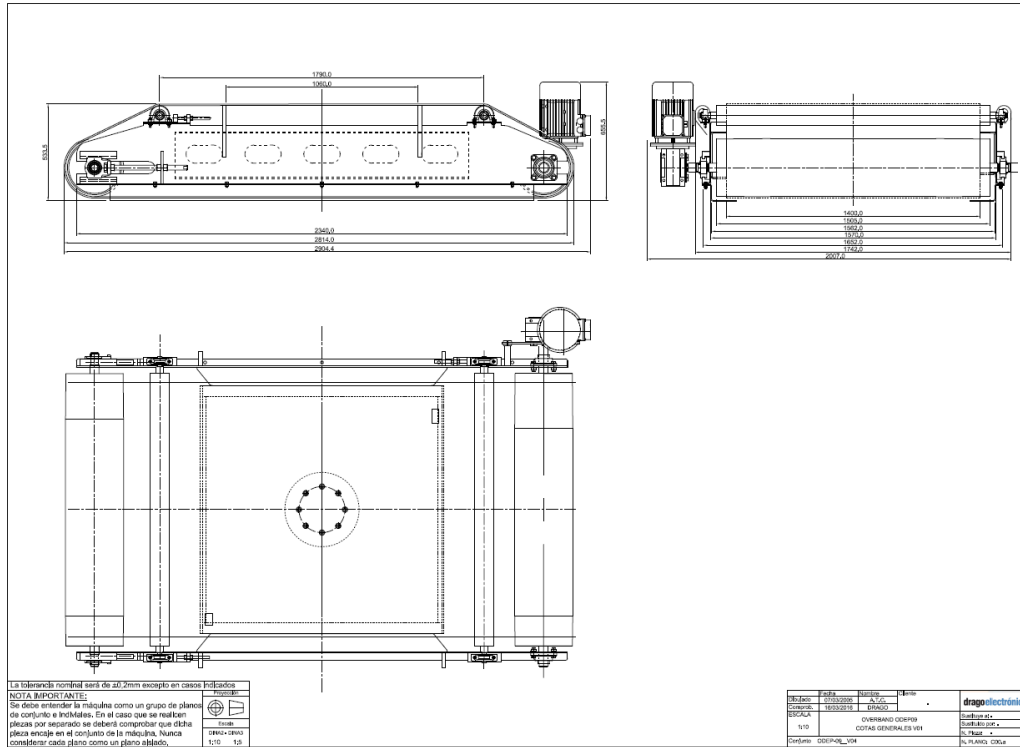
BELT SPEED : From 2 m/sec. to 5 m/sec.

DRUMS DIAMETER : 320 mm.

CONVEYOR BELT : Quality 3 EP 30/15
With anchors with 30 mm. height.
Sealed in vulcanized workshop.



OVERBAND WITH ELECTRO MAGNET TYPE ODEP



TYPE	WORK HEIGHT	SIZES ELECT. IN mm.	SIZES OVERBAND	WEIGHT KG.	POWER KW	E.E.(*) TYPE	E.E. SIZES
ODEP 1	140	405x350x350	1825x655x390	325	0,6	QE650	300x400x150
ODEP 2	150	440x370x290	1860x675x320	500	0,8	QE1000	300x400x150
ODEP 3	180	500x440x360	1920x745x400	650	1,1	QE1500	300x500x200
ODEP 4	200	600x530x380	2020x835x420	840	1,5	QE2000	400x500x250
ODEP 5	240	700x620x380	2120x954x420	1140	2	QE2500	400x600x250
ODEP 6	280	800x700x440	2220x1005x620	1190	2,7	QE3500	400x600x250
ODEP 7	320	900x800x440	2320x1105x665	2100	3,7	QE4500	500x700x250
ODEP 8	360	1000x940x480	2738x1304x665	2900	5,5	QE6500	500x700x250
ODEP 9	400	1300x1000x580	2720x1304x665	3600	7	QE9000	600x800x300
ODEP 10	450	1400x1400x600	2820x1705x1000	5500	10	QE11500	600x800x300
ODEP 13	500	1400x1600x630	3750x1900x1000	7500	13	QE15000	1000x800x300
ODEP 15	550	1550x2150x750	4000x2500x1000	10500	15	QE17000	1000x800x300

(*) Electrical equipment.

Drago Electrónica.

C/ Óptica 13 Nave 12 - 08755 Castellbisbal (Barcelona) - Spain

T 34 933 466 012 - @ ana@dragoelectronica.com www.dragoelectronica.com